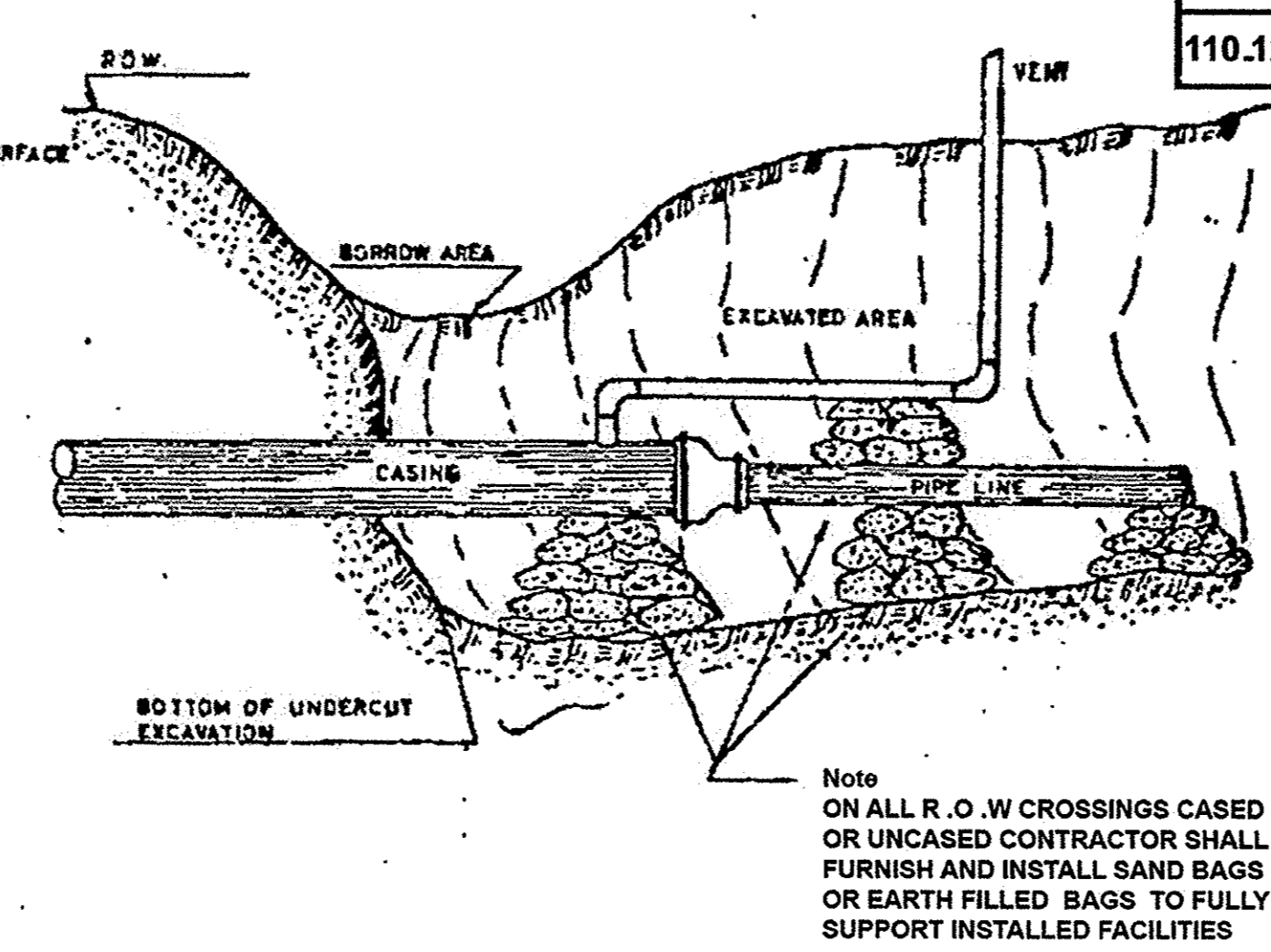
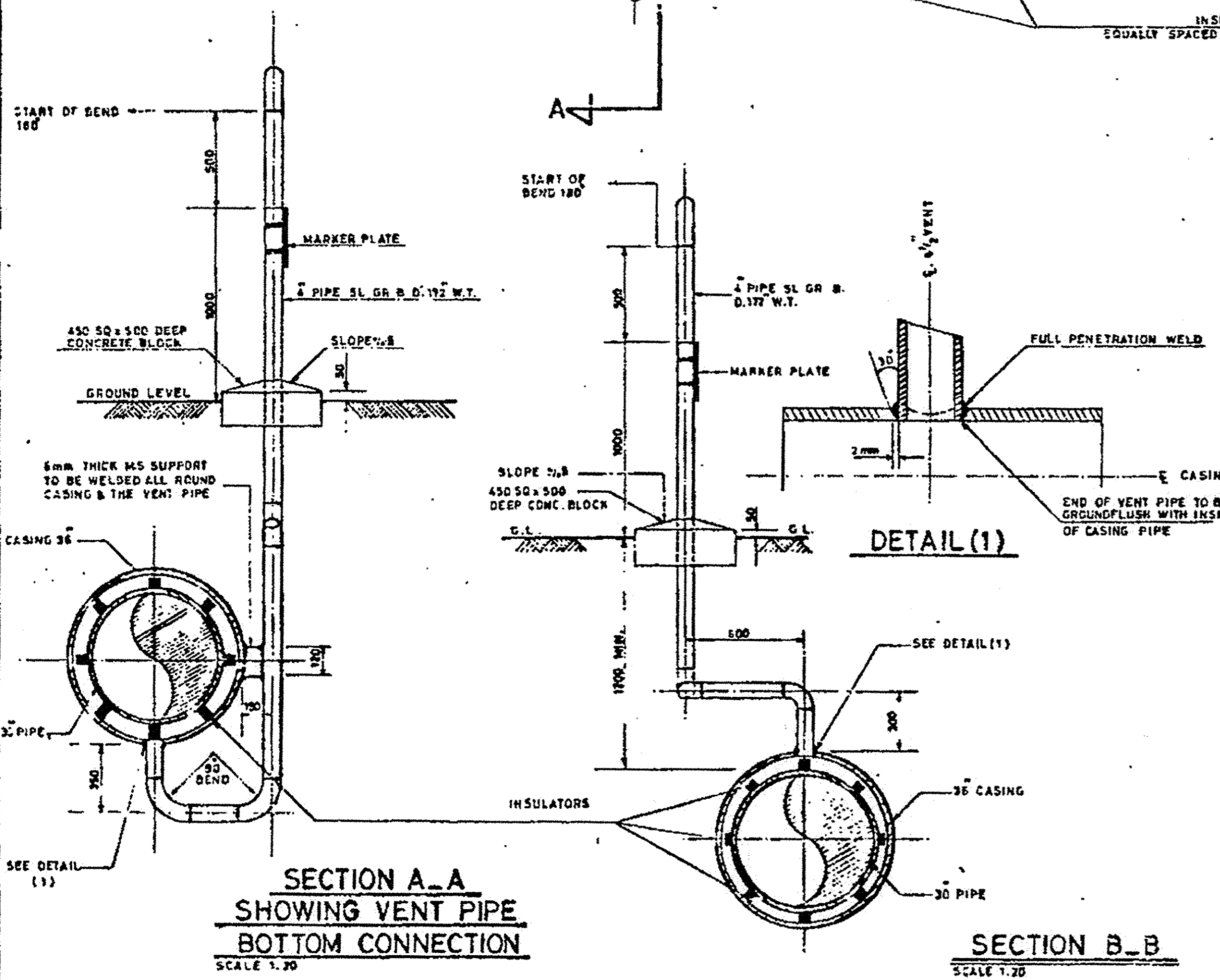
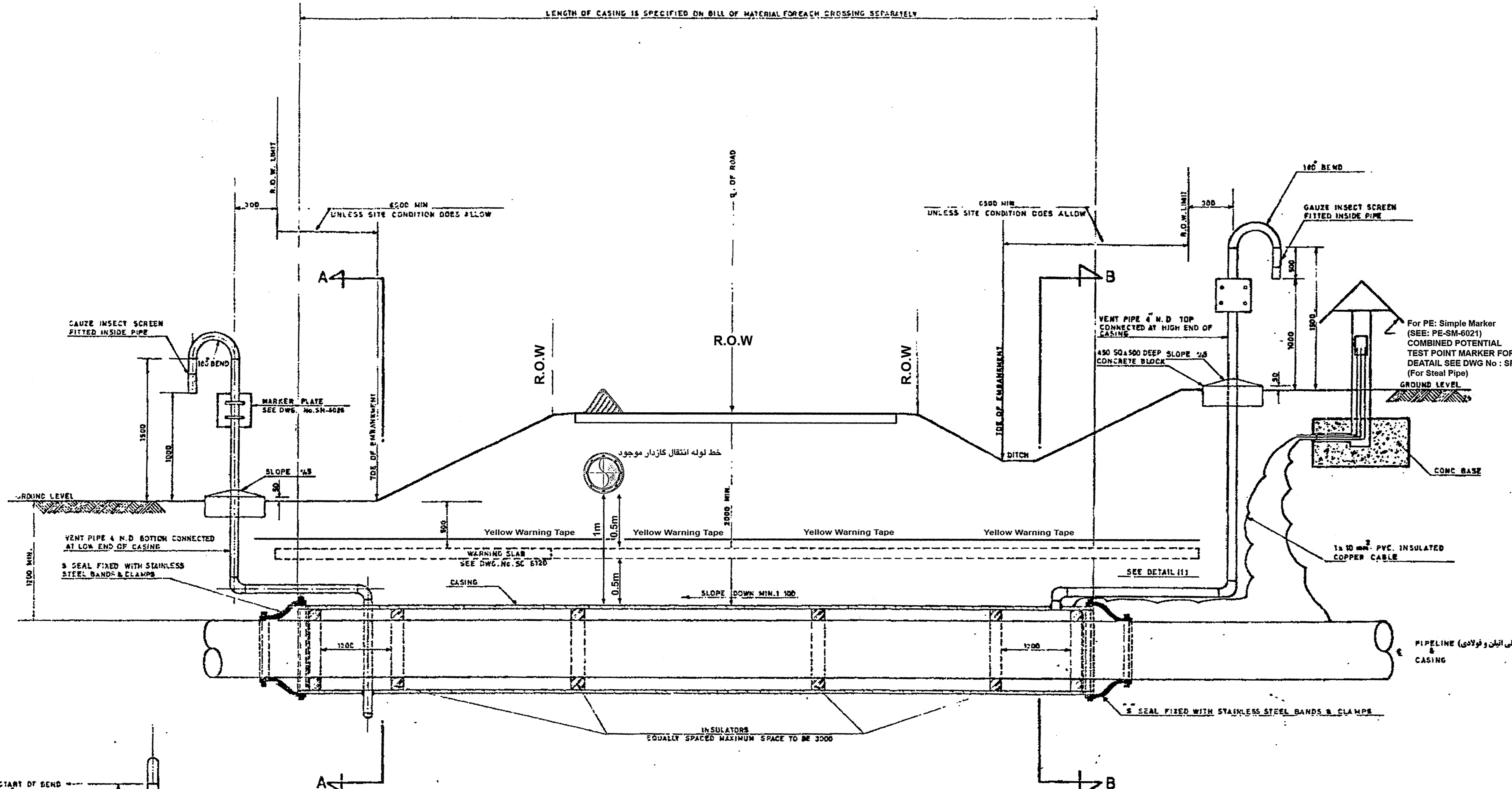


LENGTH OF CASING IS SPECIFIED ON BILL OF MATERIAL FOR EACH CROSSING SEPARATELY



CARRIER PE PIPE	CARRIER PIPE	CASING PIPE		VENT	INSULATOR SPACE
O.D.(mm)	O.D.(IN)	O.D.(IN)	TH.(IN)	O.D.(IN)	METER
63 - 90	4 1/2	8 5/8	0.188	2 3/8	3.0
110-125.160	6 5/8	10 3/4	0.219	4 1/2	3.0
		8 5/8	0.250	4 1/2	3.0
		10 3/4	0.312	4 1/2	3.0
		12 3/4	0.312	4 1/2	3.0
		14			
		16	0.312	4 1/2	3.0
		18	0.312	4 1/2	3.0
		20	0.312	4 1/2	3.0
		22	0.312	4 1/2	3.0
		24	0.375	4 1/2	3.0
		30	0.438	4 1/2	3.0
		36	0.500	4 1/2	2.8
		40	0.525	5 1/8	2.4
		42	0.525	5 7/8	2.0

GENERAL NOTES

- CASING SHALL BE FREE OF BURRS AT WELDS VENT PIPES SHALL BE INSTALLED BEFORE INSERTION OF CARRIER PIPE
- WITHIN A CASED CROSSING THE PIPELINE IS CATHODICALLY PROTECTED. CARE SHOULD BE TAKEN NOT TO DAMAGE COAT & WRAP WHEN PULLING THROUGH CARRIER PIPE AND THAT INSIDE OF THE CASING IS DRY BEFORE END SEALS ARE APPLIED.
- DOUBLE COAT AND DOUBLE WRAP ON CARRIER PIPE OVER LENGTH OF CASING AND EXTENDING 3 METERS EITHER SIDE OF END OF CASING. CASING PIPE TO BE SINGLE COAT DOUBLE WRAP VENT PIPE TO BE SIMILARY TREATED TO A HEIGHT OF 300mm. ABOVE GROUND LEVEL.
- ALL DIMENSIONS ARE IN MILLIMETRES UNLESS OTHERWISE STATED.
- EACH CASING END SHALL HAVE A MINIMUM DISTANCE OF 8 METER FROM THE CENTER LINE.
- THE CASING SHALL BE SUPPORTED FOR ITS ENTIRE LENGTH AND SHALL BE LAID SO AS TO SLOPE SLIGHTLY.
- IT IS NECESSARY TO BOND AND CATHODICALLY PROTECT THE CASING.
- CASING SHALL BE FREE OF ICICLES AT WELDS. HOLES IN CASING PIPE FOR VENTS SHOULD BE PREPARED AND WELDED IN BEFORE INSERTION OF CARRIER PIPE.
- EXPOSED PIPES SHALL BE PAINTED IN ACCORDANCE WITH N.I.G.C. SPECIFICATION (YELLOW)
- BACKFILL OVER CASING SHALL BE PLACED IN 6 LAYERS AN PNEUMATICALLY TAMPED TO REACH THE DENSITY OF UN- DISTURBED SURROUNDINGS AND SURFACE MATERIAL SHALL BE RESTORED TO ORIGINAL CONDITION.

REFERENCE DRAWINGS

DWG.No.	TITLE
SM-6228	STANDARD DETAILS OF MARKER PLATE AT CASED CROSSINGS
SP-6028	COMBINED MARKER, TEST POINT AND BOND BOX
SC-6120	CONCRETE WARNING SLAB

REV.	DESCRIPTION	CHECK	DATE	APP.	DATE
D					
C					
B					
A					

FARS GAS COMPANY

GAS DISTRIBUTION NETWORK

R.O.W CROSSING DETAIL (For PE & Steel Pipe)

Design	Approved	Approved	Date	Drawing No
M.R.Zareian	M.A.Hakimi	A.A.Meydani	Ordbeshest 90	N3 - 5448
			Scale	
			N.T.S	

Note ON ALL R.O.W CROSSINGS CASED OR UNCASED CONTRACTOR SHALL FURNISH AND INSTALL SAND BAGS OR EARTH FILLED BAGS TO FULLY SUPPORT INSTALLED FACILITIES