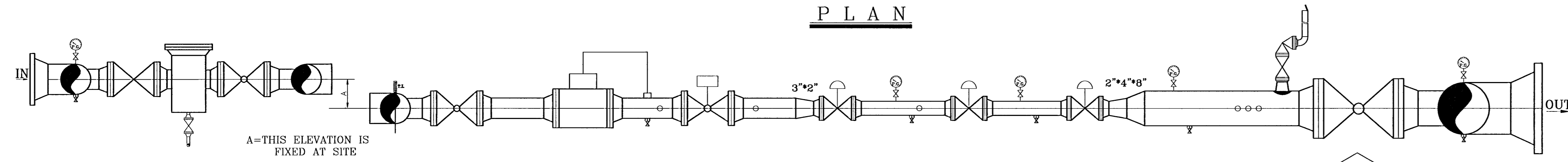
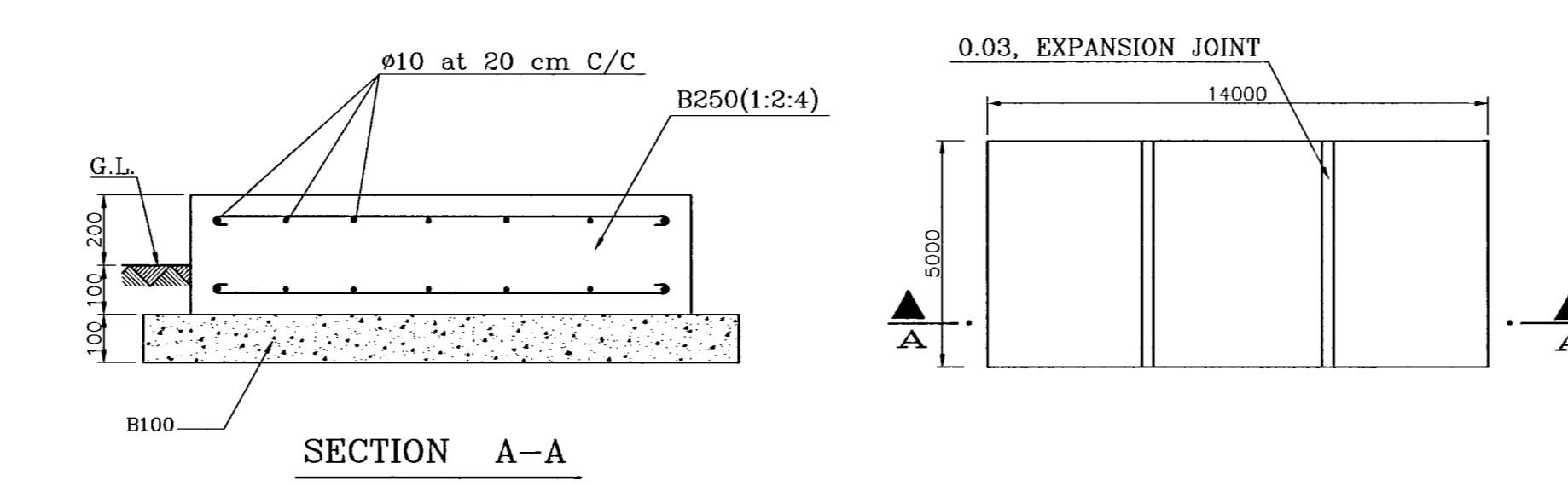
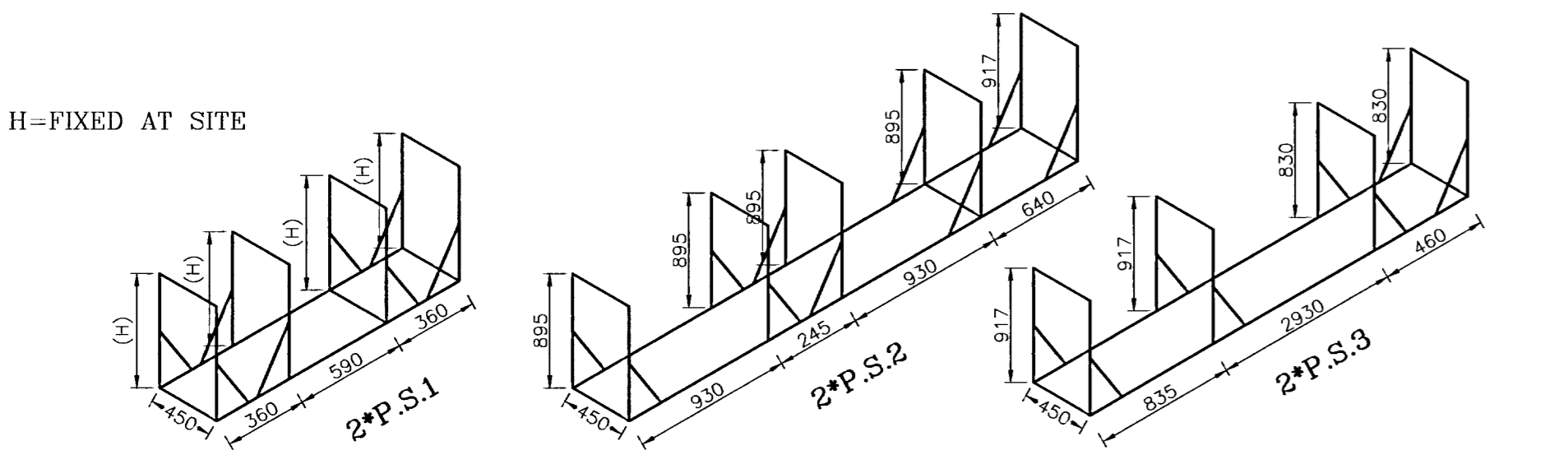


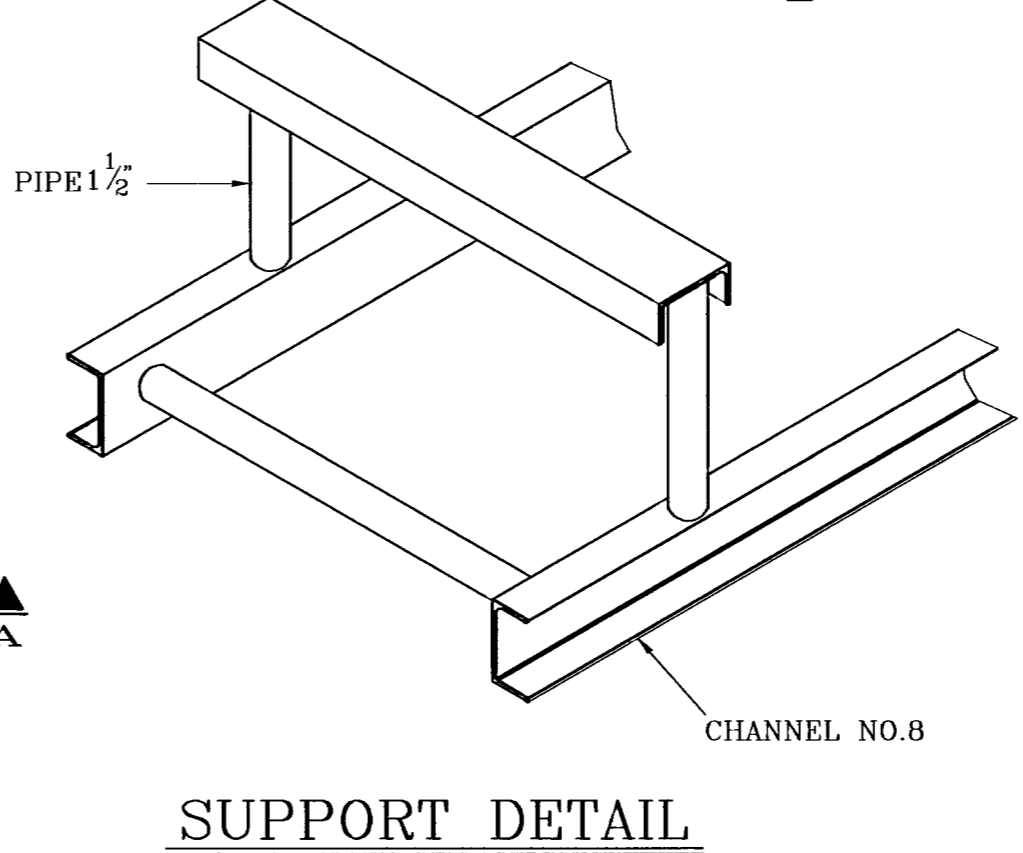
P L A N



SECTION A-A



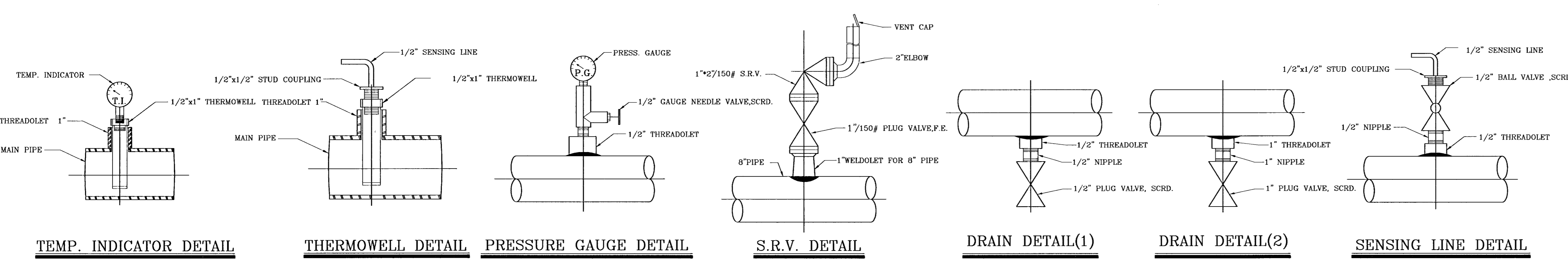
SECTION A-A



SUPPORT DETAIL

STATION FOUNDATION DETAIL

INSTRUMENT INSTALLATION DETAIL



TEMP. INDICATOR DETAIL THERMOWELL DETAIL PRESSURE GAUGE DETAIL S.R.V. DETAIL DRAIN DETAIL(1) DRAIN DETAIL(2) SENSING LINE DETAIL

ITEM	SIZE	DESCRIPTION	CLASS
1	2"	AXIAL FLOW VALVE	600
2	2"	AXIAL FLOW VALVE	600
3	1"×2"	SAFETY RELIEF VALVE	150
4	3"	DRY GAS FILTER	600
5	3"	SAFETY SHUT OFF VALVE	600
6	3"	G-160 GAS TURBINE METER EQUIPPED WITH T.&P. CORR.DEVICE	600
7	3"	PLUG VALVE, F.E.	600
8	1"	PLUG VALVE, F.E.	150
9	3"	BALL VALVE, F.E.	600
10	8"	BALL VALVE, F.E.	150

SETTING DATA

	CUT1	CUT2		S.R.V.	S.S.O.V.
	REG.	M.REG	A.REG.		
RUN 1	250	62	60	66	72
RUN 2	250	60	58	66	74

NOTES

- 1-ALL DIMENSIONS ARE IN mm.
- 2-ALL WELDING JOINTS SHOULD BE INSPECTED & RADIOGRAPHED %100.
- 3-THE STATION SHOULD BE HYDROSTATICALLY TESTED UP TO 1.5xMAX W.P.
- 4-SUPPORT NO.1 DIM.'S ARE BASED ON FILTER HEIGHT AND OTHER SUPPORTS DIM.'S ARE BASED ON 1000mm ST.HEIGHT.
- 5-FOR ST. FENCING DETAIL SEE DRG. NO. SC-6109/A
- 6-INLET , OUTLET AND BY-PASS VALVES OF HEATER HAVE BEEN CONSIDERED IN THE HEATER INSTALLATION PACKAGE DOCUMENT.
- *TO COMPLETE THIS DRAWING REFER TO DROWING NO N3-4026*

DESIGN DATA

P _{IN}	600-1000	PSIG
P _{OUT}	60	PSIG
Q _s	20000	SCMH

LIMITING COMPONENT=METER

REV.	DESCRIPTION	CHECK	DATE	APP.	DATE
A	APPROVED AS A STANDARD MAP	B.DERGHANI	86/4/17	A.A.MFYDANSHAHI	86/4/17

NATIONAL IRANIAN GAS COMPANY

GAS DELIVERY TO INDUSTRIES AND POWER PLANT AFFAIRS
ENGINEERING SECTION AND TECHNICAL SERVICES.

STD.ST.1000.60.20000

DRAWN (CONSULTANT)	DRAWN CH. (CONSULTANT)	FINAL CH.	SCALE	DRAWING NO.
M.KHALEDI	N.MOKHTARANI	S.KAZEMI	N.T.S.	STD.ST. 1000.60.20000 A
DESIGN (CONSULTANT)	DESIGN.CH.	APPROVED	DATE	
N.MOKHTARANI	B.MIRZAIE	M.TAVAJJOH	AZAR 81	