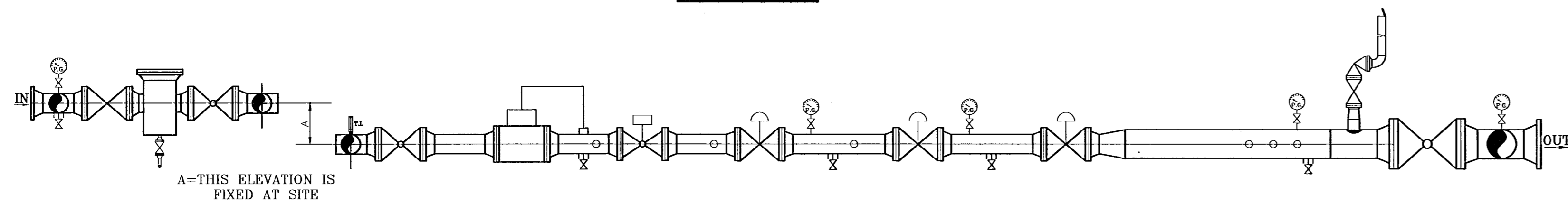
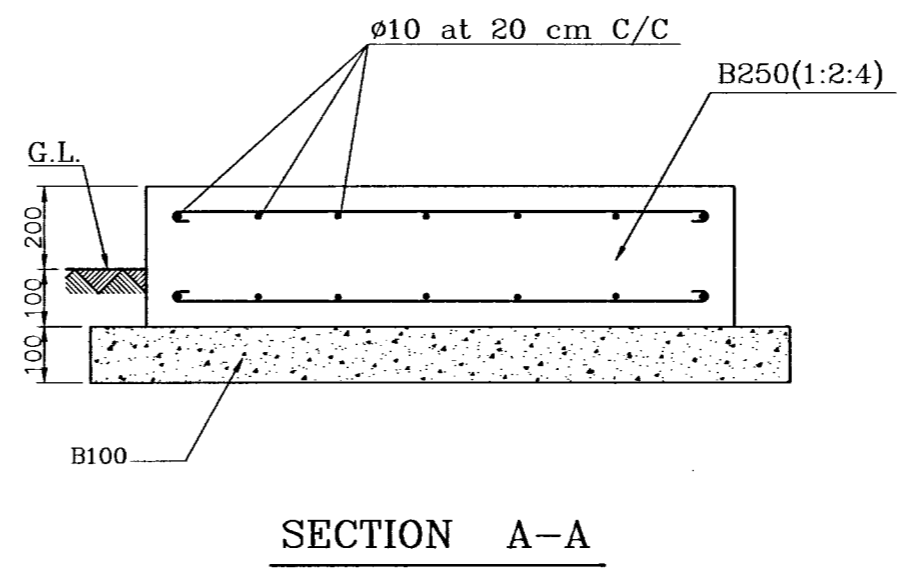
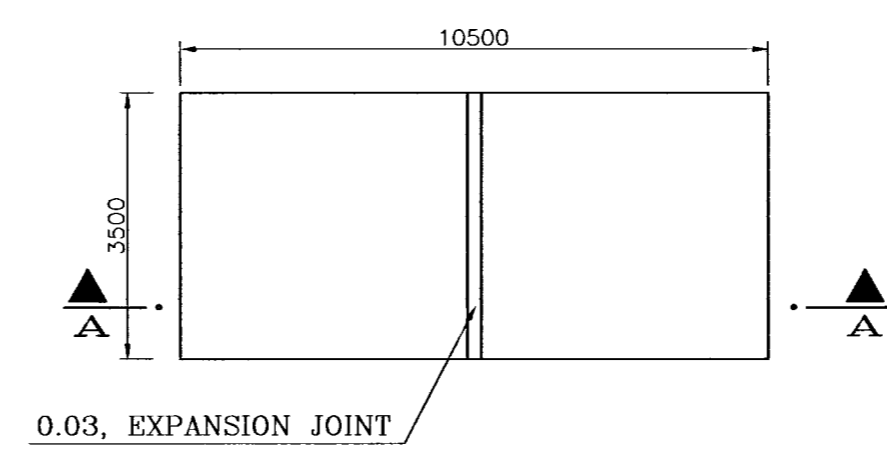


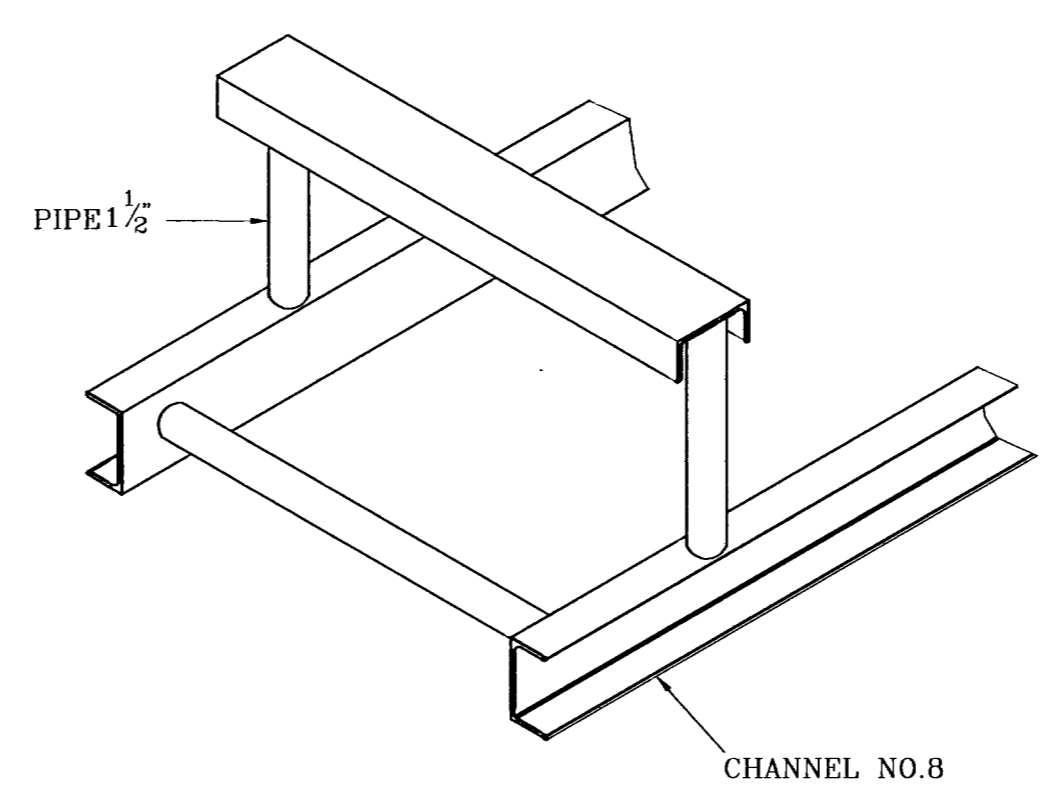
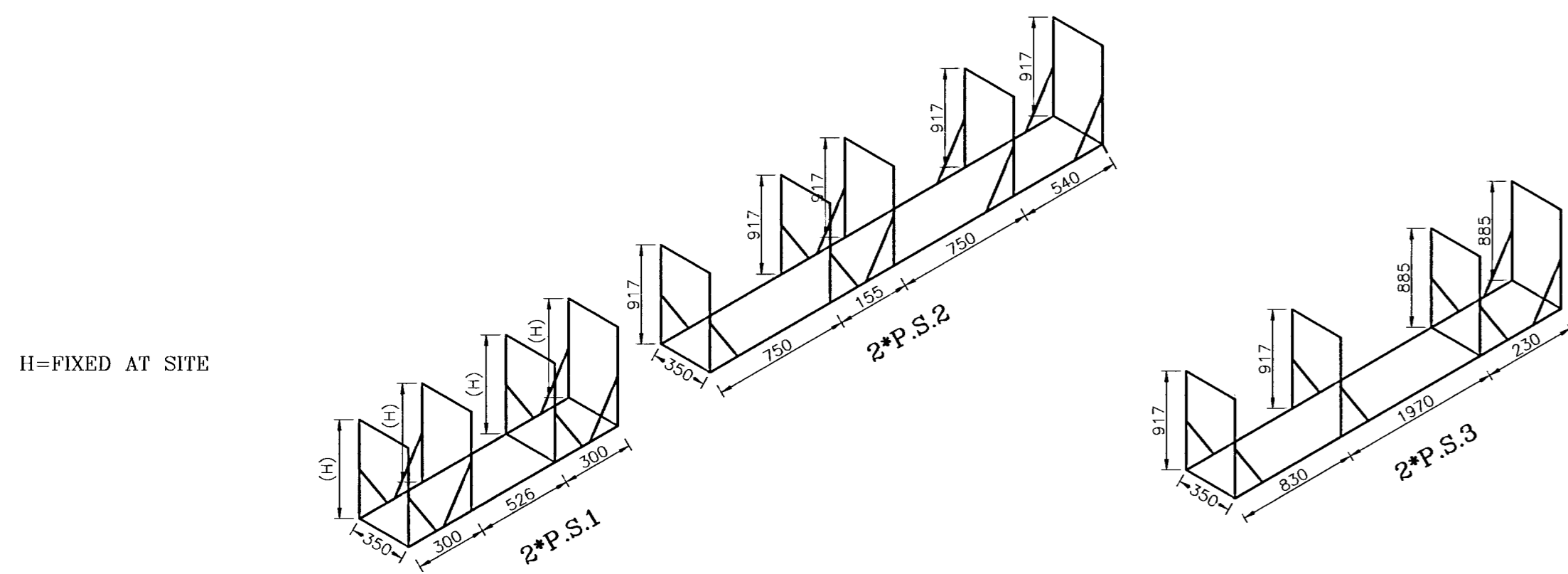
**PLAN**



**SECTION A-A**



**STATION FOUNDATION DETAIL**



**SUPPORT DETAIL**

ITEM	SIZE	DESCRIPTION	CLASS
1	2"	AXIAL FLOW VALVE (S.P.=250 PSIG)	600
2	2"	AXIAL FLOW VALVE (S.P.=60 PSIG)	600
3	1"*2"	SAFETY RELIEF VALVE	150
4	2"	DRY GAS FILTER	600
5	2"	SAFETY SHUT OFF VALVE	600
6	2"	G-65 GAS TURBINE METER EQUIPPED WITH T.&P. CORR.DEVICE	600
7	2"	PLUG VALVE, F.E.	600
8	1"	PLUG VALVE, F.E.	150
9	2"	BALL VALVE, F.E.	600
10	4"	BALL VALVE, F.E.	150

**SETTING DATA**

	CUT1		CUT2		S.R.V.	S.S.O.V.
	REG.	M.REG	A.REG.			
RUN 1	250	62	60	66	72	
RUN 2	250	60	58	66	74	

**NOTES**

- 1-ALL DIMENSIONS ARE IN mm.
- 2-ALL WELDING JOINTS SHOULD BE INSPECTED & RADIOGRAPHED %100.
- 3-THE STATION SHOULD BE HYDROSTATICALLY TESTED UP TO 1.5xMAX W.P.
- 4-SUPPORT NO.1 DIM.'S ARE BASED ON FILTER HEIGHT AND OTHER SUPPORTS DIM.'S ARE BASED ON 1000mm ST.HEIGHT.
- 5-FOR ST. FENCING DETAIL SEE DRG. NO. SC-6109/A
- 6-INLET , OUTLET AND BY-PASS VALVES OF HEATER HAVE BEEN CONSIDERED IN THE HEATER INSTALLATION PACKAGE DOCUMENT.
- \*TO COMPLETE THIS DRAWING REFER TO DROWING NO N3-4221\*

**DESIGN DATA**

$P_{IN}$	600-1000	PSIG
$P_{OUT}$	60	PSIG
$Q_s$	2500	SCMH

LIMITING COMPONENT=METER

REV.	DESCRIPTION	CHECK	DATE	APP.	DATE
A	APPROVED AS A STANDARD MAP	B.DEHGHANI	86/4/17	A.A.MOYDANSHAHI	86/4/17

**NATIONAL IRANIAN GAS COMPANY**

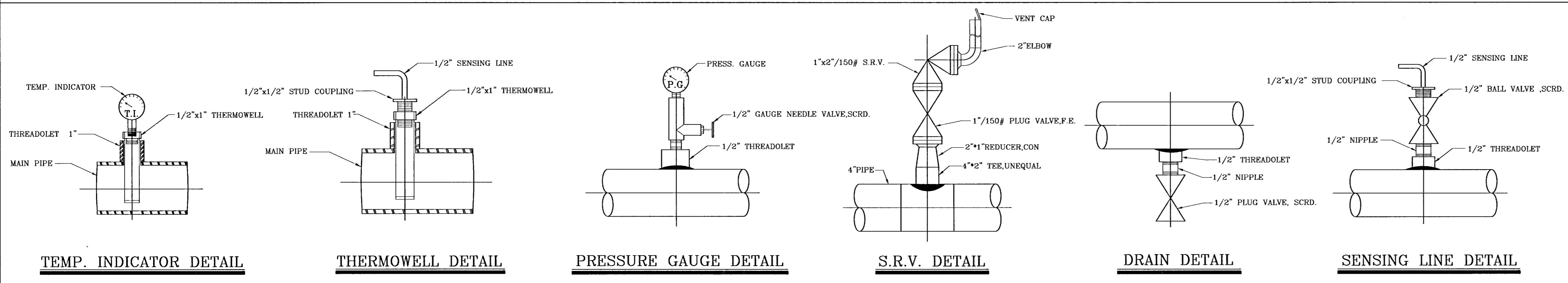
GAS DELIVERY TO INDUSTRIES AND POWER PLANT AFFAIRS

ENGINEERING SECTION AND TECHNICAL SERVICES.

**STD.ST.1000.60.2500**

DRAWN (CONSULTANT)	DRAWN CH. (CONSULTANT)	FINAL CH.	SCALE	DRAWING NO.
M.KHALEDI	N.MOKHTARANI	S.KAZEMI	N.T.S.	STD.ST.1000.60.2500
DESIGN (CONSULTANT)	DESIGN.CH.	APPROVED	DATE	
N.MOKHTARANI	B.MIRZAI	M.TAVAJJOH	AZAR 81	A

**INSTRUMENT INSTALLATION DETAIL**



**TEMP. INDICATOR DETAIL**

**THERMOWELL DETAIL**

**PRESSURE GAUGE DETAIL**

**S.R.V. DETAIL**

**DRAIN DETAIL**

**SENSING LINE DETAIL**