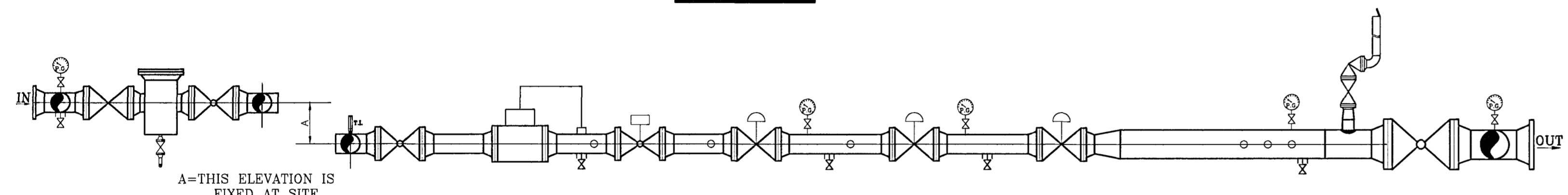
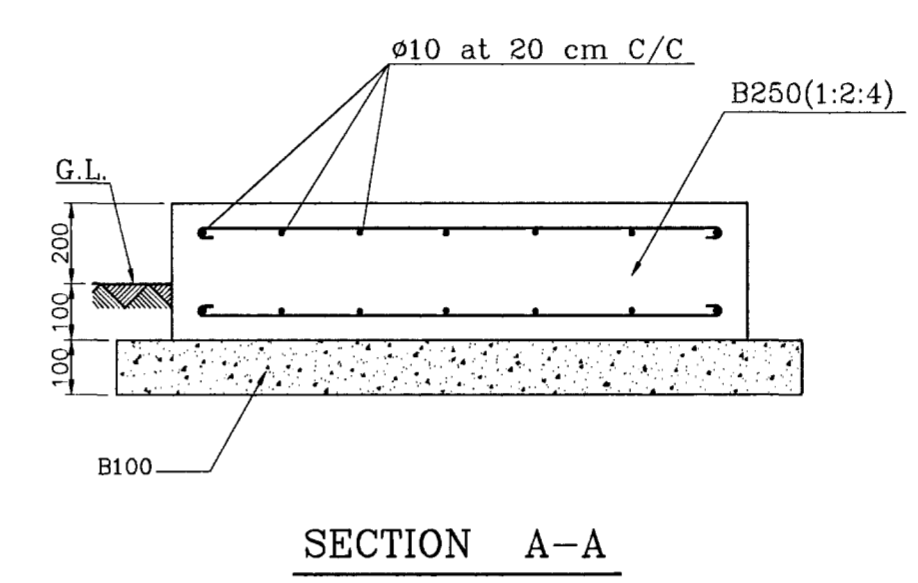
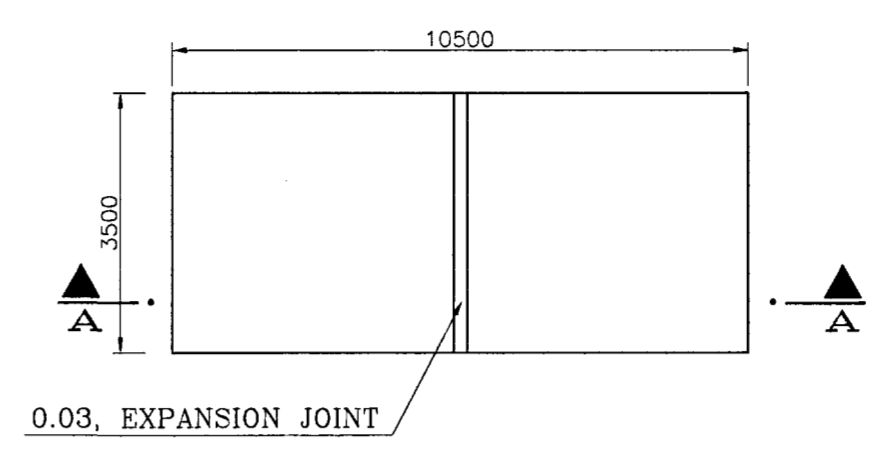


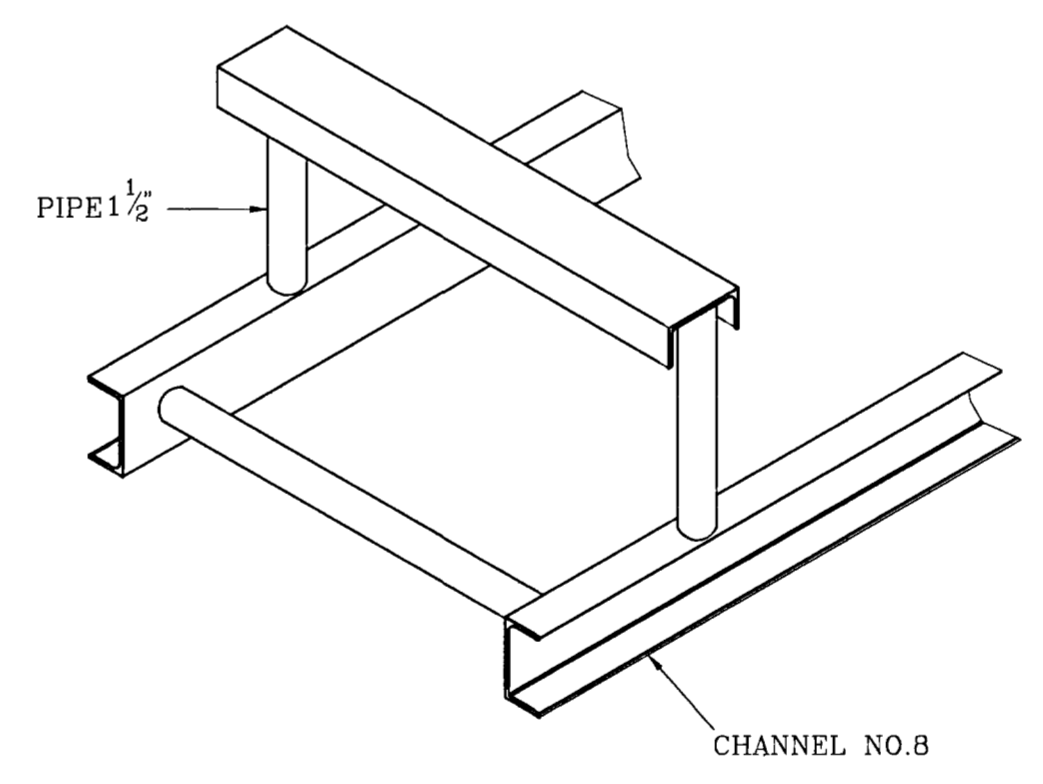
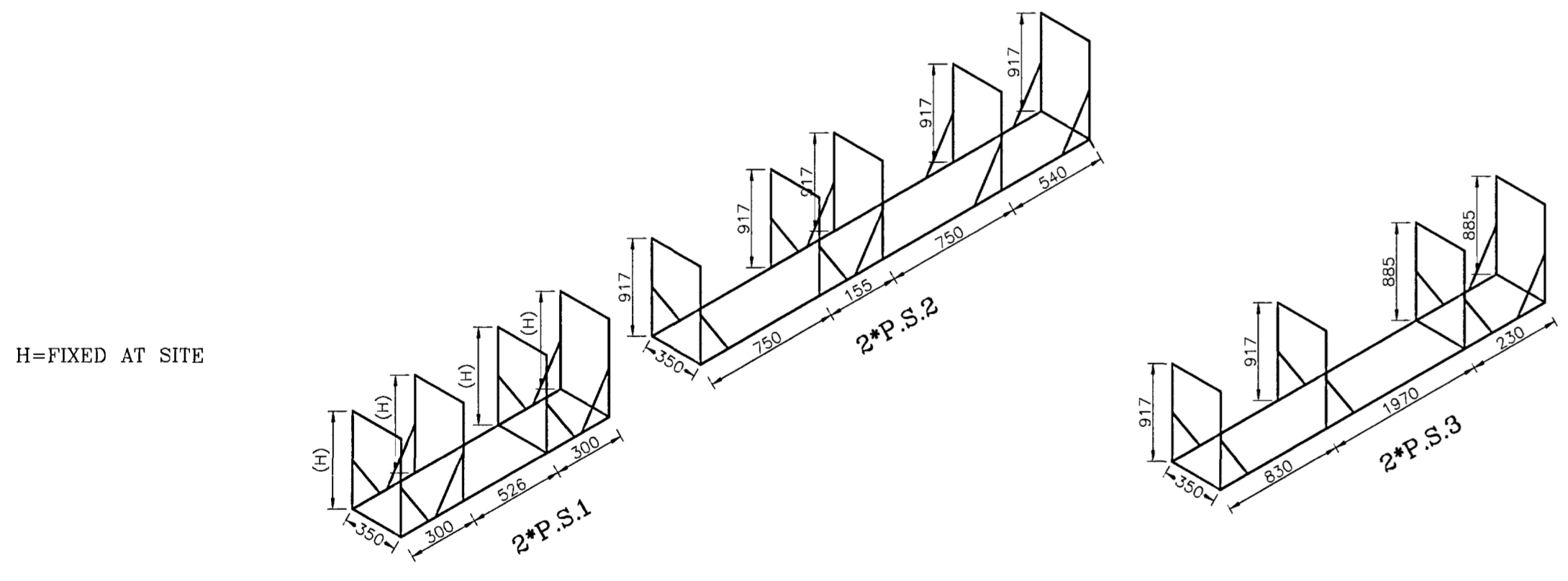
PLAN



SECTION A-A

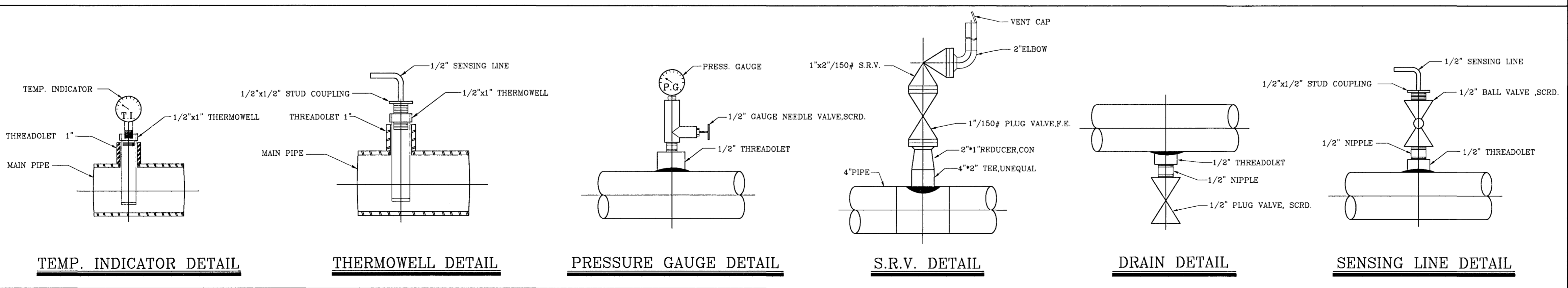


STATION FOUNDATION DETAIL



SUPPORT DETAIL

INSTRUMENT INSTALLATION DETAIL



ITEM	SIZE	DESCRIPTION	CLASS
1	2"	AXIAL FLOW VALVE (S.P.=250 PSIG)	600
2	2"	AXIAL FLOW VALVE (S.P.=60 PSIG)	600
3	1" x 2"	SAFETY RELIEF VALVE	150
4	2"	DRY GAS FILTER	600
5	2"	SAFETY SHUT OFF VALVE	600
6	2"	G-65 GAS TURBINE METER EQUIPPED WITH T.&P. CORR.DEVICE	600
7	2"	PLUG VALVE, F.E.	600
8	1"	PLUG VALVE, F.E.	150
9	2"	BALL VALVE, F.E.	600
10	3"	BALL VALVE, F.E.	150

SETTING DATA

	CUT1		CUT2		S.R.V.	S.S.O.V.
	REG.	M.REG	A.REG.			
RUN 1	250	62	60	66	66	72
RUN 2	250	60	58	66	66	74

NOTES

- 1-ALL DIMENSIONS ARE IN mm.
 - 2-ALL WELDING JOINTS SHOULD BE INSPECTED & RADIOGRAPHED %100.
 - 3-THE STATION SHOULD BE HYDROSTATICALLY TESTED UP TO 1.5xMAX W.P.
 - 4-SUPPORT NO.1 DIM.'S ARE BASED ON FILTER HEIGHT AND OTHER SUPPORTS DIM.'S ARE BASED ON 1000mm ST.HEIGHT.
 - 5-FOR ST. FENCING DETAIL SEE DRG. NO. SC-6109/A
 - 6-INLET , OUTLET AND BY-PASS VALVES OF HEATER HAVE BEEN CONSIDERED IN THE HEATER INSTALLATION PACKAGE DOCUMENT.
- *TO COMPLETE THIS DRAWING REFER TO DROWING NO N3-4221*

DESIGN DATA

P _{IN}	400-1000	PSIG
P _{OUT}	60	PSIG
Q _s	885	SCMH

LIMITING COMPONENT=METER

REV.	DESCRIPTION	CHECK	DATE	APP.	DATE
A	APPROVED AS A STANDARD MAP	B.DEHGHANI	08/4/17	A.A.MEYDANSHAHI	08/4/17

NATIONAL IRANIAN GAS COMPANY

GAS DELIVERY TO INDUSTRIES AND POWER PLANT AFFAIRS

ENGINEERING SECTION AND TECHNICAL SERVICES.

STD.ST.1000.60.885

DRAWN (CONSULTANT)	DRAWN CH. (CONSULTANT)	FINAL CH.	SCALE	DRAWING NO.
M.KHALEDI	N.MOKHTARANI	S.KAZEMI	N.T.S.	STD.ST. 1000.60.885
DESIGN (CONSULTANT)	DESIGN.CH.	APPROVED	DATE	
N.MOKHTARANI	B.MIRZAI	M.TAVAJJOH	AZAR 81	A