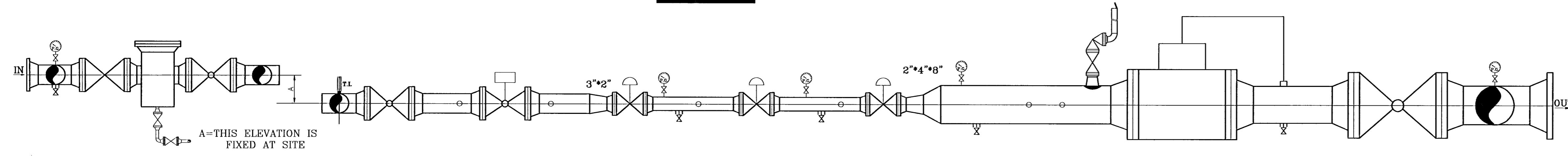
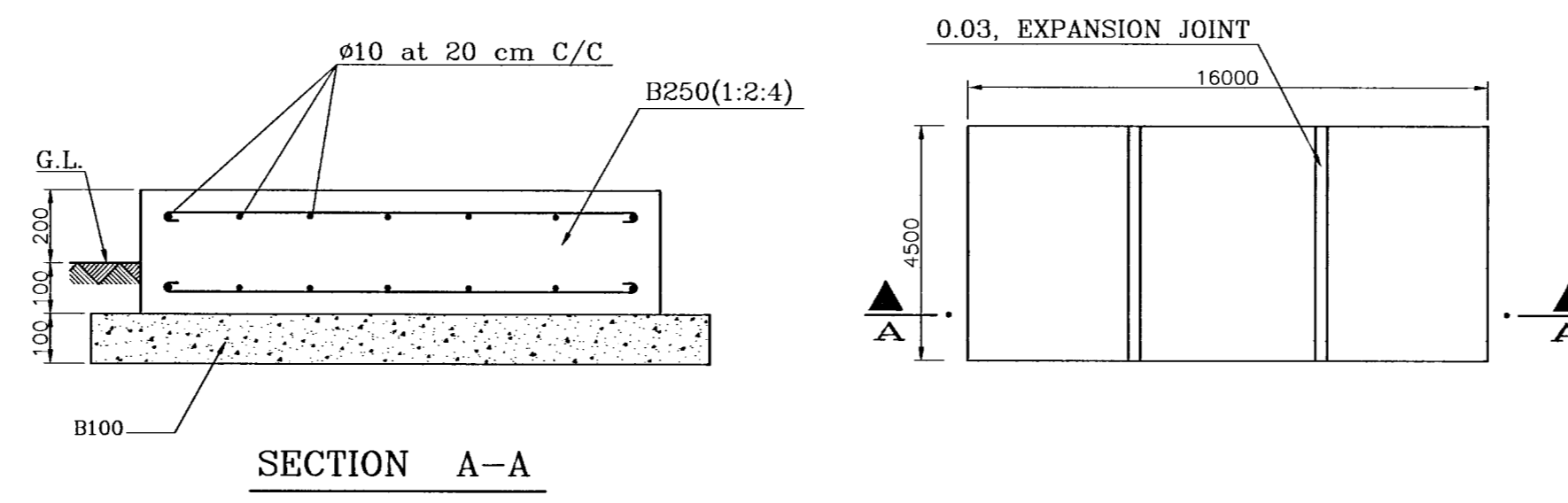
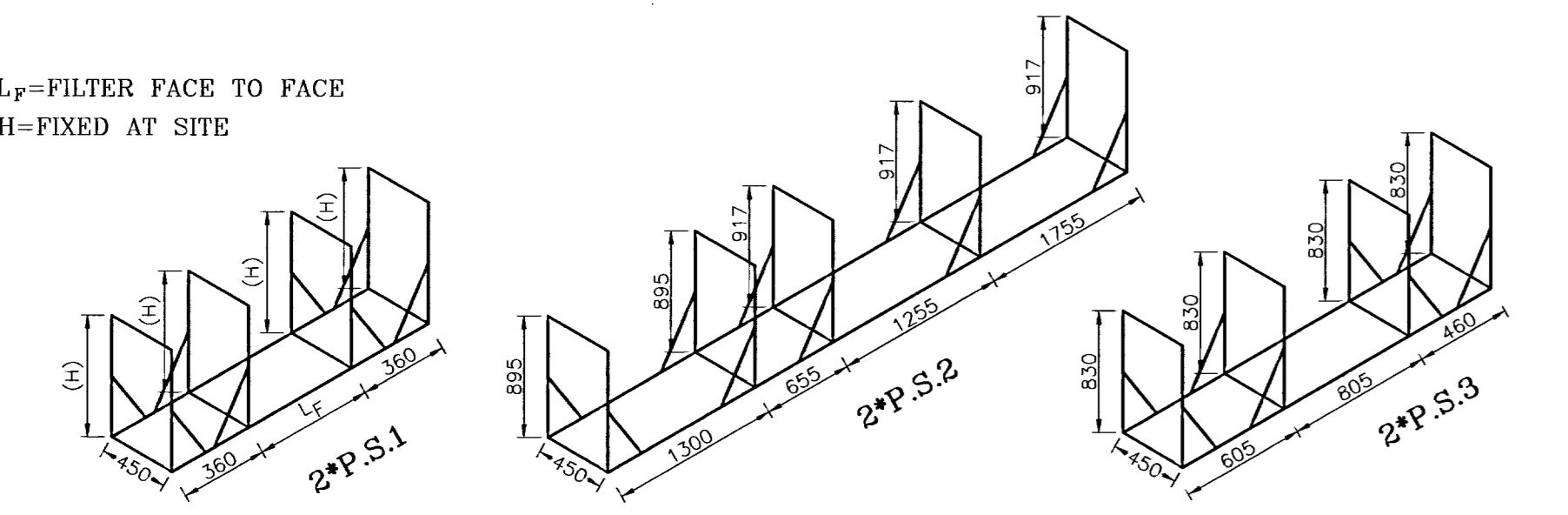


**PLAN**



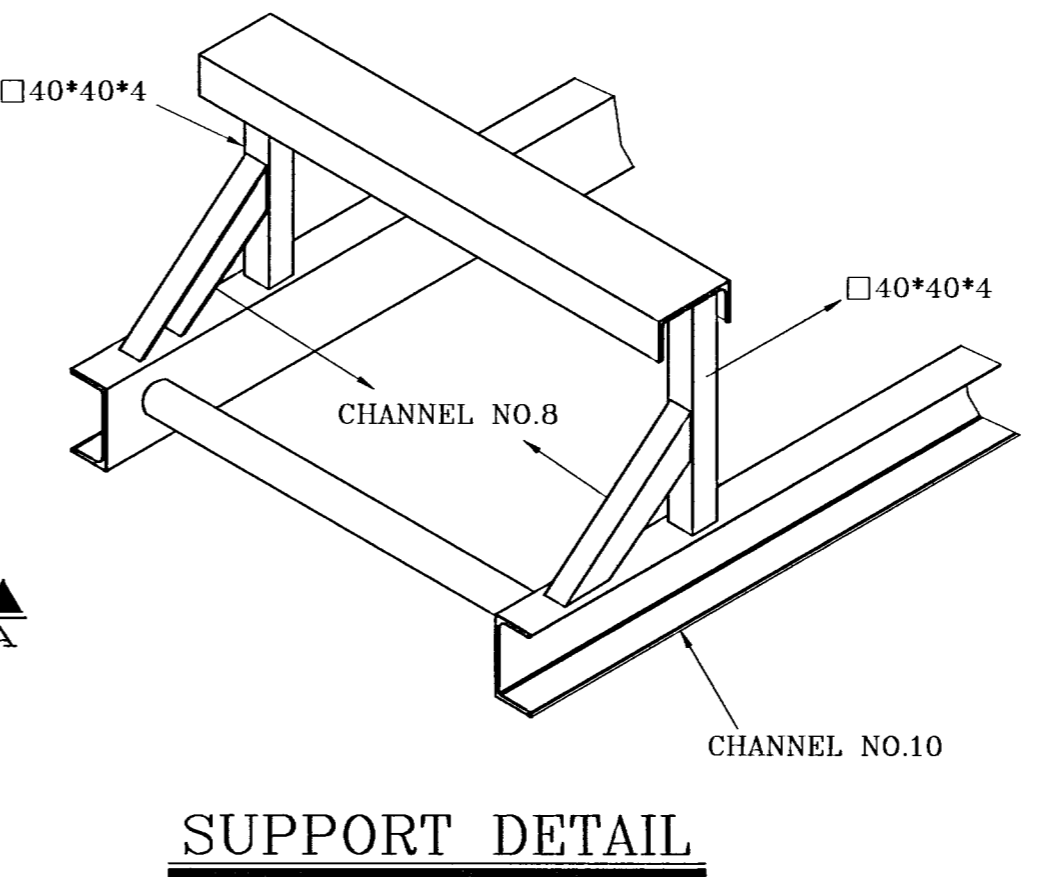
**SECTION A-A**

L<sub>F</sub>=FILTER FACE TO FACE  
H=FIXED AT SITE



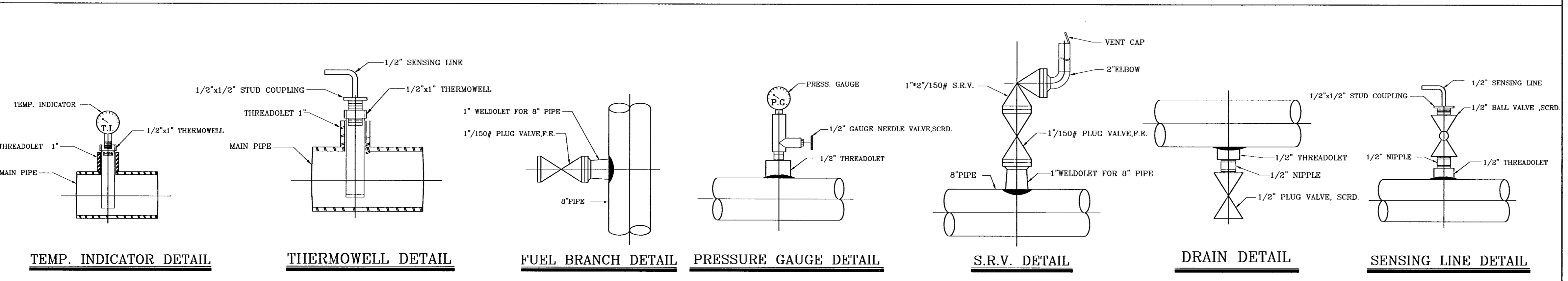
**SECTION A-A**

**STATION FOUNDATION DETAIL**



**SUPPORT DETAIL**

**INSTRUMENT INSTALLATION DETAIL**



ITEM	SIZE	DESCRIPTION	CLASS
1	2"	GAS PRESS. REGULATOR (S.P.=600 PSIG)	600
2	2"	GAS PRESS. REGULATOR (S.P.=250 PSIG)	600
3	2"	GAS PRESS. REGULATOR (S.P.=60 PSIG)	600
4	1"x2"	SAFETY RELIEF VALVE (S.P.=66 PSIG)	150
5	3"	DRY GAS FILTER	600
6	3"	SAFETY SHUT OFF VALVE (S.P.=72 PSIG)	600
7	8"	G-1600GAS TURBINE METER EQUIPPED WITH T.&P. CORR.DEVICE	150
8	3"	PLUG VALVE, F.E.	600
9	1"	PLUG VALVE, F.E.	150
10	3"	BALL VALVE, F.E.	600
11	8"	BALL VALVE, F.E.	150

	SETTING DATA				
	CUT1 REG.	CUT2 REG.	CUT3 REG.	S.R.V.	S.S.O.V.
RUN 1	600	260	60	66	72
RUN 2	580	250	58	66	74

**NOTES**

- 1-ALL DIMENSIONS ARE IN mm.
- 2-ALL WELDING JOINTS SHOULD BE INSPECTED & RADIOGRAPHED %100.
- 3-THE STATION SHOULD BE HYDROSTATICALLY TESTED UP TO 1.5xMAX W.P.
- 4-SUPPORT NO.1 DIM.'S ARE BASED ON FILTER HEIGHT AND OTHER SUPPORTS DIM.'S ARE BASED ON 1000mm ST.HEIGHT.
- 5-INLET , OUTLET AND BY-PASS VALVES OF HEATER HAVE BEEN CONSIDERED IN THE HEATER INSTALLATION PACKAGE DOCUMENT.
- 6-REGULATORS SHALL BE EQUIPPED WITH LIMITING DEVICE FOR MAX. CAPACITY 10000 SCMH
- 7-RELIEF CAPACITY IS TEN PERCENT OF LINE CAPACITY

DESIGN DATA	
P <sub>IN</sub>	800-1400 PSIG
P <sub>OUT</sub>	60 PSIG
Q <sub>S</sub>	10000 SCMH

\*TO COMPLETE THIS DRAWING REFER TO DROWING NO N3-4138\*

F					
E					
D					
C					
B					
A	APPROVED AS A STANDARD MAP	B.DERGHANI	86/4/17	A.A.MHYDANSHAHI	86/4/17
REV.	DESCRIPTION	CHECK	DATE	APP.	DATE

<b>NATIONAL IRANIAN GAS COMPANY</b>				
ENGINEERING AND TECHNICAL AFFAIRS				
<b>STD.ST.1400.60.10000</b>				
DRAWN (CONSULTANT)	DRAWN CH. (CONSULTANT)	FINAL CH.	SCALE	DRAWING NO.
M.KHALEDI	N.MOKHTARANI	S.KAZEMI	N.T.S.	
DESIGN (CONSULTANT)	DESIGN.CH.	APPROVED	DATE	STD.ST.
N.MOKHTARANI	B.MIRZAI	M.GHODSIZADEH	FAR 85	1400.60.10000
				A