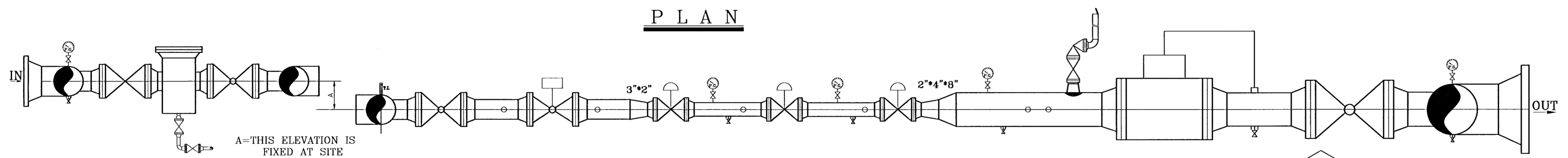
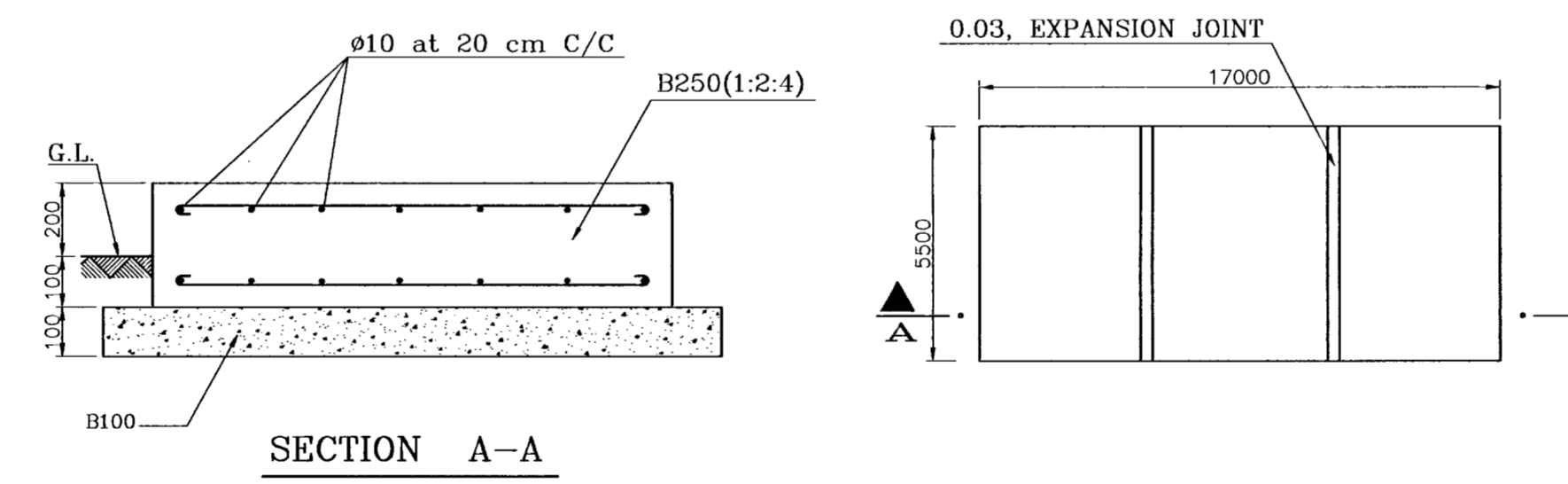
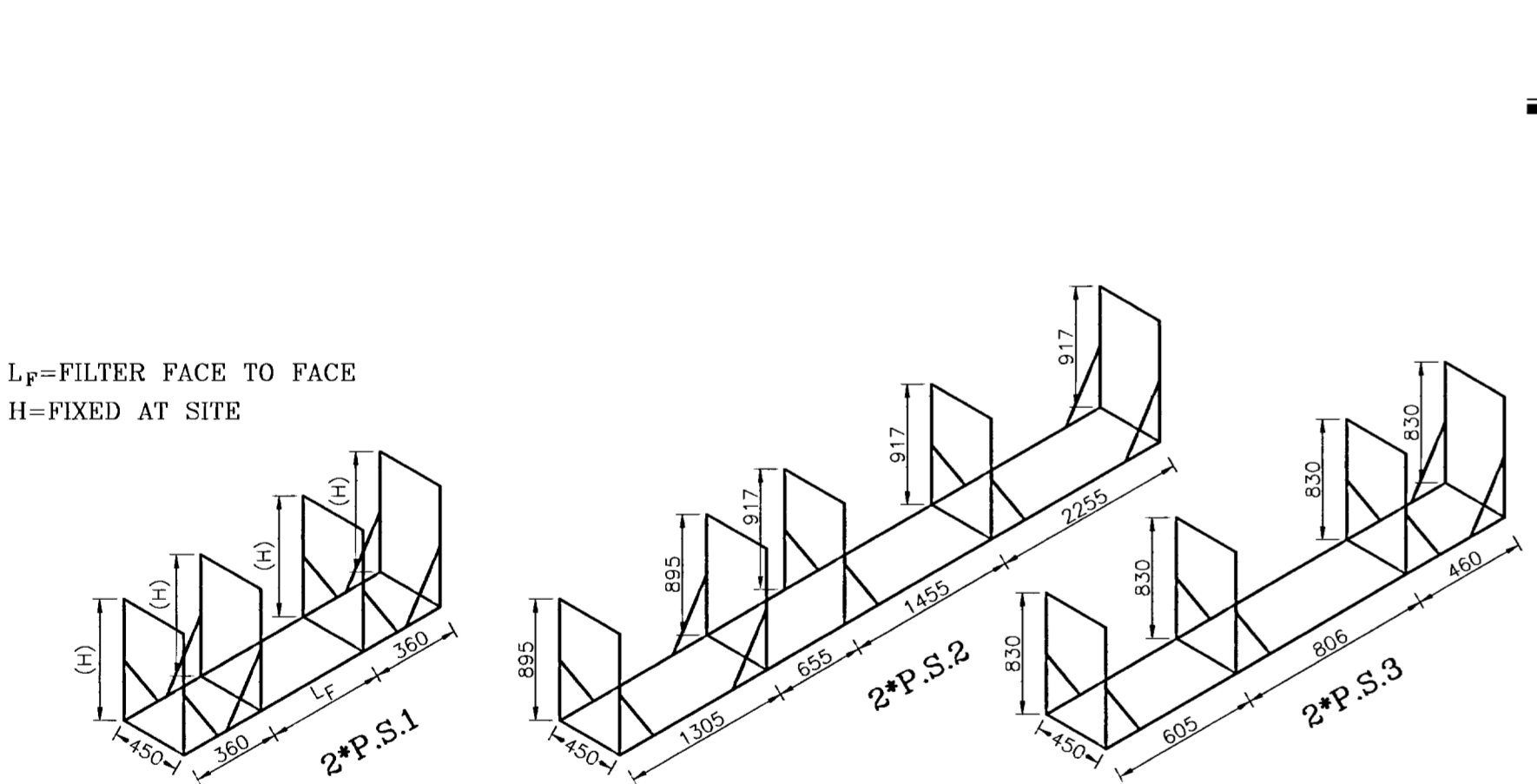


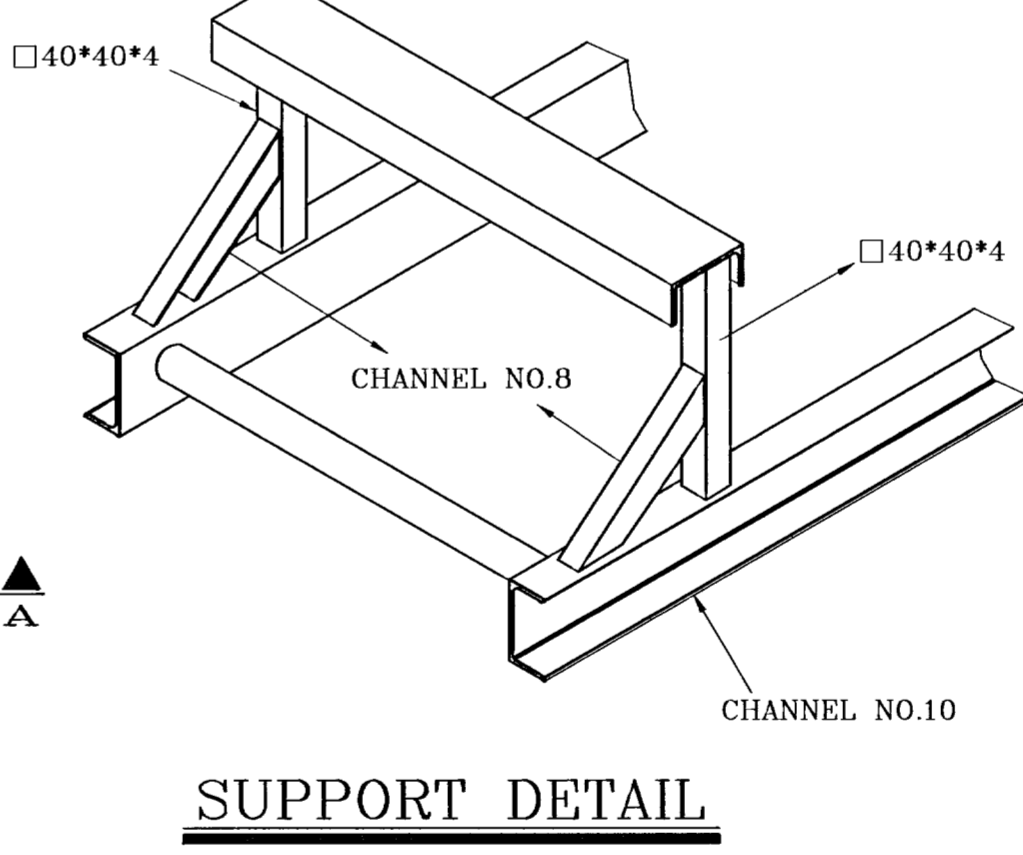
P L A N



SECTION A-A

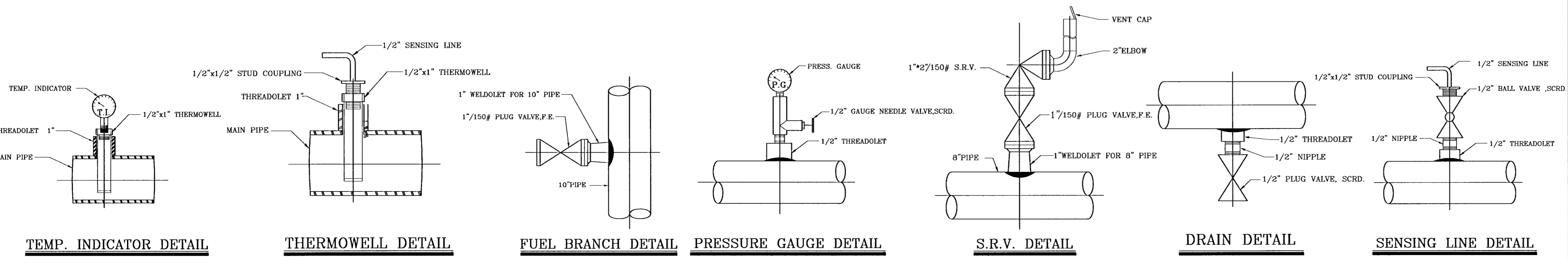


SECTION A-A



SUPPORT DETAIL

INSTRUMENT INSTALLATION DETAIL



ITEM	SIZE	DESCRIPTION	CLASS
1	2"	GAS PRESS. REGULATOR (S.P.=600 PSIG)	600
2	2"	GAS PRESS. REGULATOR (S.P.=250 PSIG)	600
3	2"	GAS PRESS. REGULATOR (S.P.=60 PSIG)	600
4	1"×2"	SAFETY RELIEF VALVE (S.P.=66 PSIG)	150
5	3"	DRY GAS FILTER	600
6	3"	SAFETY SHUT OFF VALVE (S.P.=72 PSIG)	600
7	8"	G-1600GAS TURBINE METER EQUIPPED WITH T.&P. CORR.DEVICE	150
8	3"	PLUG VALVE, F.E.	600
9	1"	PLUG VALVE, F.E.	150
10	3"	BALL VALVE, F.E.	600
11	8"	BALL VALVE, F.E.	150

	SETTING DATA				
	CUT1 REG.	CUT2 M.REG.	CUT2 A.REG.	S.R.V.	S.S.O.V.
RUN 1	600	250	60	66	72
RUN 2	580	240	58	66	74
RUN 3	560	230	56	66	76

NOTES

- ALL DIMENSIONS ARE IN mm.
- ALL WELDING JOINTS SHOULD BE INSPECTED & RADIOGRAPHED %100.
- THE STATION SHOULD BE HYDROSTATICALLY TESTED UP TO 1.5xMAX W.P.
- SUPPORT NO.1 DIM.'S ARE BASED ON FILTER HEIGHT AND OTHER SUPPORTS DIM.'S ARE BASED ON 1000mm ST.HEIGHT.
- INLET, OUTLET AND BY-PASS VALVES OF HEATER HAVE BEEN CONSIDERED IN THE HEATER INSTALLATION PACKAGE DOCUMENT.
- REGULATORS SHALL BE EQUIPPED WITH LIMITING DEVICE FOR MAX. CAPACITY 10000 SCMH
- RELIEF CAPACITY IS TEN PERCENT OF LINE CAPACITY

DESIGN DATA	
P _{IN}	800-1400 PSIG
P _{OUT}	60 PSIG
Q _s	20000 SCMH

TO COMPLETE THIS DRAWING REFER TO DROWING NO N3-4145

F				
E				
D				
C				
B				
A	APPROVED AS A STANDARD MAP	B.DEHQHANI	88/4/17	A.A.MEYDANSAHI
REV.	DESCRIPTION	CHECK	DATE	APP

NATIONAL IRANIAN GAS COMPANY				
ENGINEERING AND TECHNICAL AFFAIRS				
STD.ST.1400.60.20000				
DRAWN (CONSULTANT)	DRAWN CH. (CONSULTANT)	FINAL CH.	SCALE	DRAWING NO.
M.KHALEDI	N.MOKHTARANI	S.KAZEMI	N.T.S.	STD.ST. 1400.60.20000 A
DESIGN (CONSULTANT)	DESIGN.CH.	APPROVED	DATE	
N.MOKHTARANI	B.MIRZAI	M.GHODSIZADEH	FAR 85	