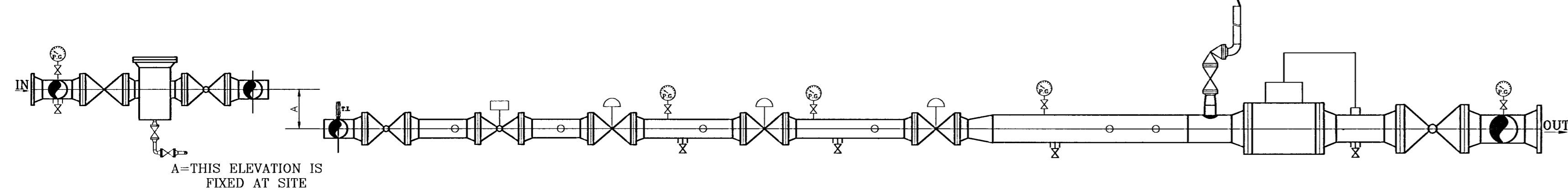
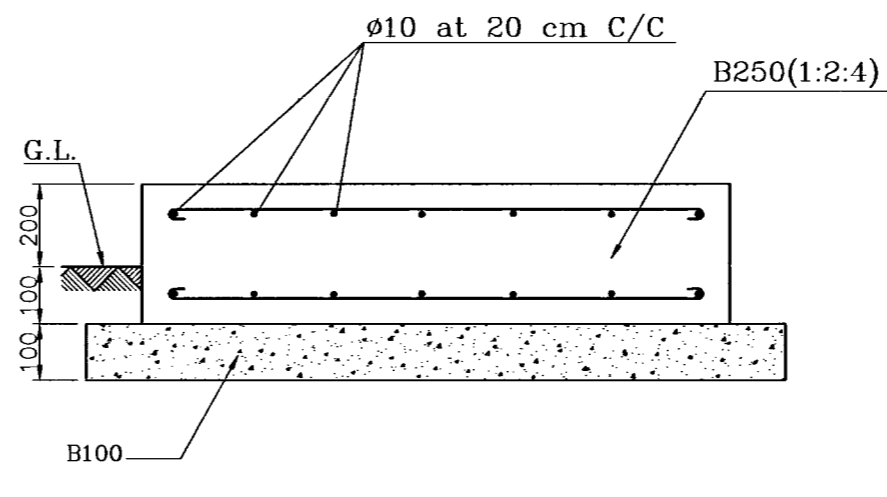
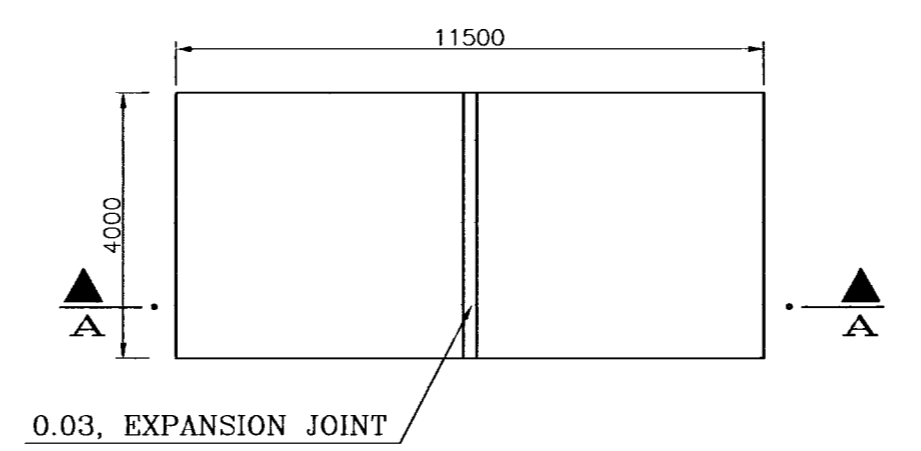


**PLAN**

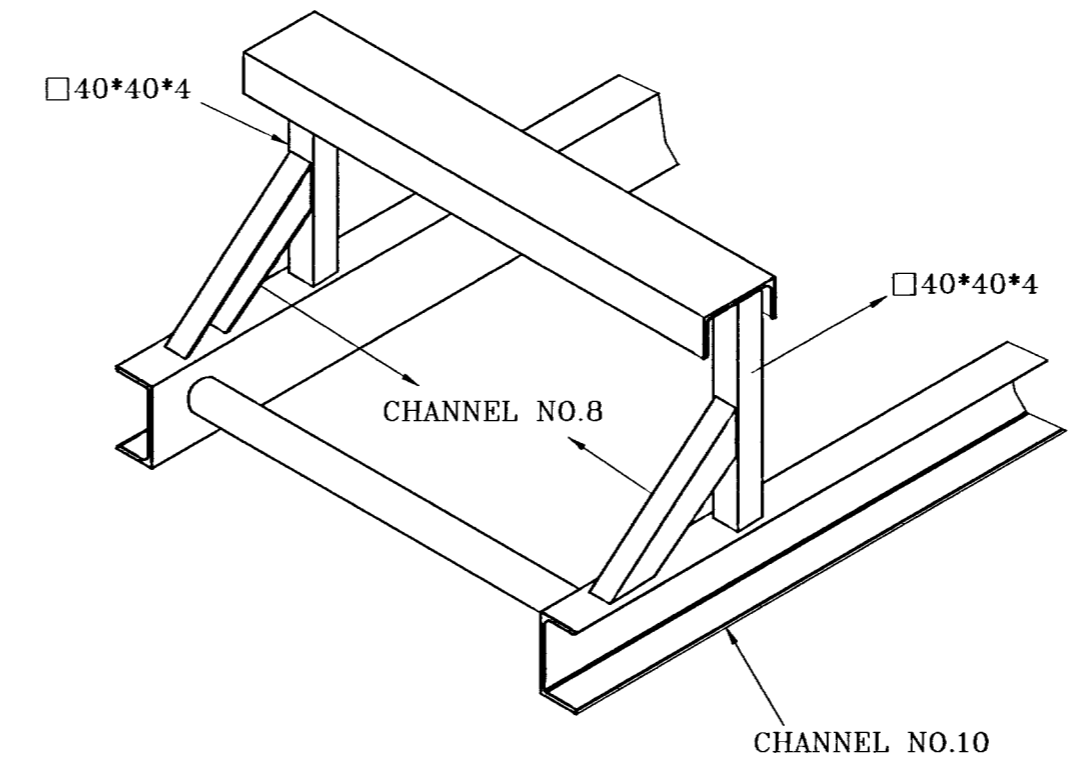
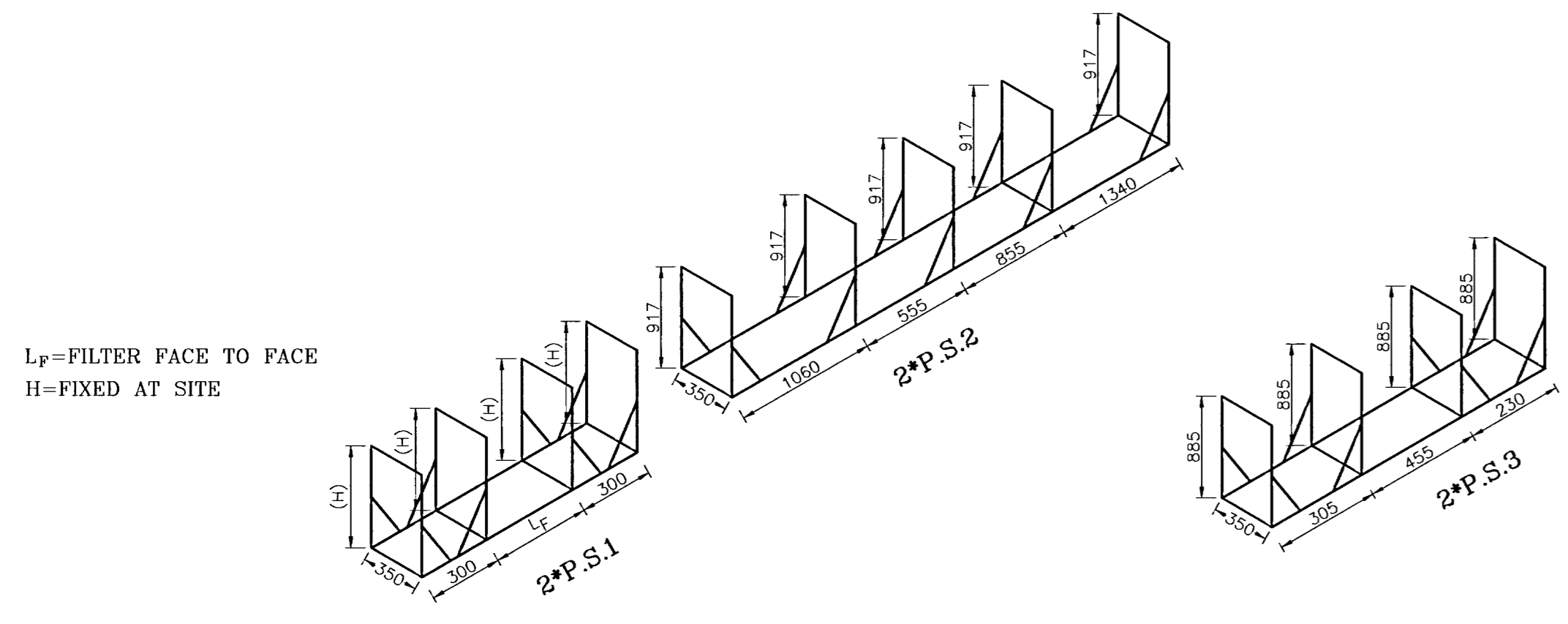


**SECTION A-A**



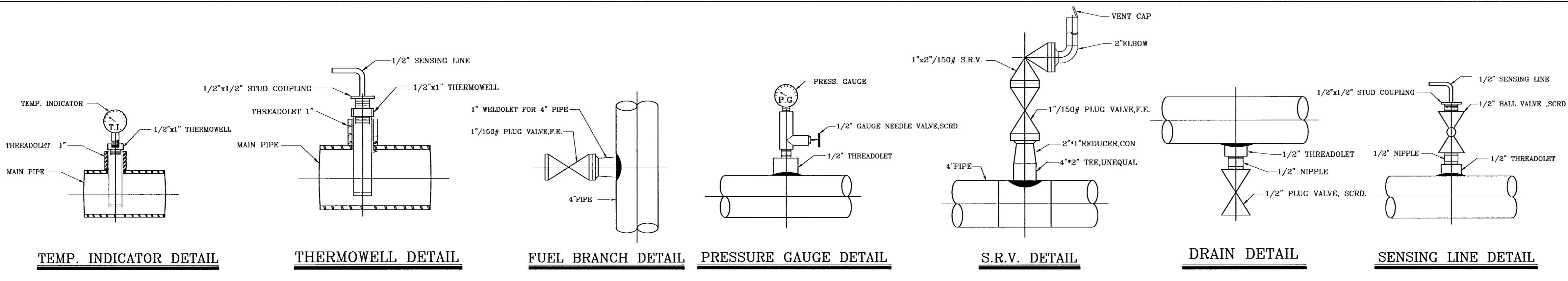
**SECTION A-A**

**STATION FOUNDATION DETAIL**



**SUPPORT DETAIL**

**INSTRUMENT INSTALLATION DETAIL**



ITEM	SIZE	DESCRIPTION	CLASS
1	2"	GAS PRESS. REGULATOR (S.P.=600 PSIG)	600
2	2"	GAS PRESS. REGULATOR (S.P.=250 PSIG)	600
3	2"	GAS PRESS. REGULATOR (S.P.=60 PSIG)	600
4	1"x2"	SAFETY RELIEF VALVE (S.P.=66 PSIG)	150
5	2"	DRY GAS FILTER	600
6	2"	SAFETY SHUT OFF VALVE (S.P.=72 PSIG)	600
7	4"	G-400 GAS TURBINE METER EQUIPPED WITH T.&P. CORR.DEVICE	150
8	2"	PLUG VALVE, F.E.	600
9	1"	PLUG VALVE, F.E.	150
10	2"	BALL VALVE, F.E.	600
11	4"	BALL VALVE, F.E.	150

SETTING DATA					
	CUT1	CUT2	CUT3	S.R.V.	S.S.O.V.
RUN 1	600	260	60	66	72
RUN 2	580	250	58	66	74

- NOTES**
- ALL DIMENSIONS ARE IN mm.
  - ALL WELDING JOINTS SHOULD BE INSPECTED & RADIOGRAPHED %100.
  - THE STATION SHOULD BE HYDROSTATICALLY TESTED UP TO 1.5xMAX W.P.
  - SUPPORT NO.1 DIM.'S ARE BASED ON FILTER HEIGHT AND OTHER SUPPORTS DIM.'S ARE BASED ON 1000mm ST.HEIGHT.
  - INLET , OUTLET AND BY-PASS VALVES OF HEATER HAVE BEEN CONSIDERED IN THE HEATER INSTALLATION PACKAGE DOCUMENT.
  - REGULATORS SHALL BE EQUIPPED WITH LIMITING DEVICE FOR MAX. CAPACITY 2500 SCMH
  - RELIEF CAPACITY IS TEN PERCENT OF LINE CAPACITY

DESIGN DATA		
P <sub>IN</sub>	800-1400	PSIG
P <sub>OUT</sub>	60	PSIG
Q <sub>S</sub>	2500	SCMH

\*TO COMPLETE THIS DRAWING REFER TO DROWING NO N3-4139\*

REV.	DESCRIPTION	CHECK	DATE	APP.	DATE
A	APPROVED AS A STANDARD MAP	B.DHSHANI	86/4/17	A.A.MEYDANSHAH	86/4/17

**NATIONAL IRANIAN GAS COMPANY**

ENGINEERING AND TECHNICAL AFFAIRS

**STD.ST.1400.60.2500**

DRAWN (CONSULTANT)	DRAWN CH. (CONSULTANT)	FINAL CH.	SCALE	DRAWING NO.
M.KHALEDI	N.MOKHTARANI	S.KAZEMI	N.T.S.	STD.ST.1400.60.2500
DESIGN (CONSULTANT)	DESIGN.CH.	APPROVED	DATE	A
N.MOKHTARANI	B.MIRZAI	M.GHODSIZADEH	FAR 85	