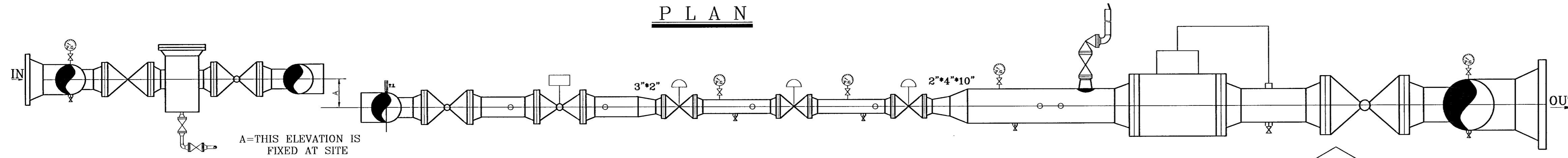
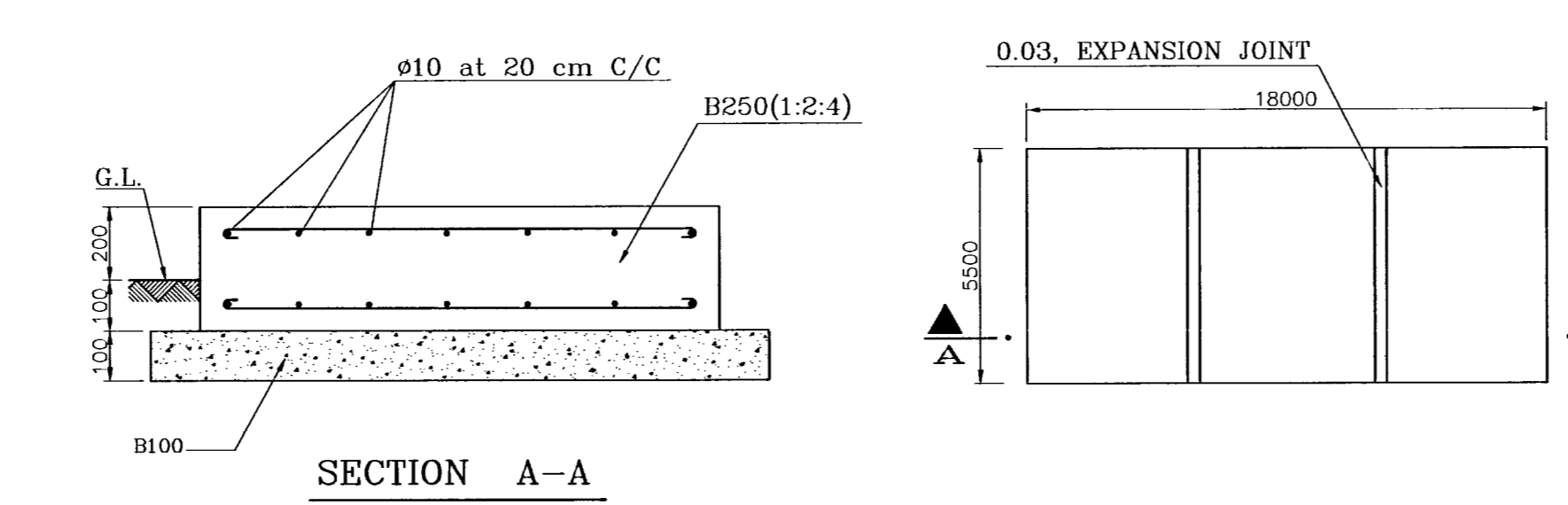
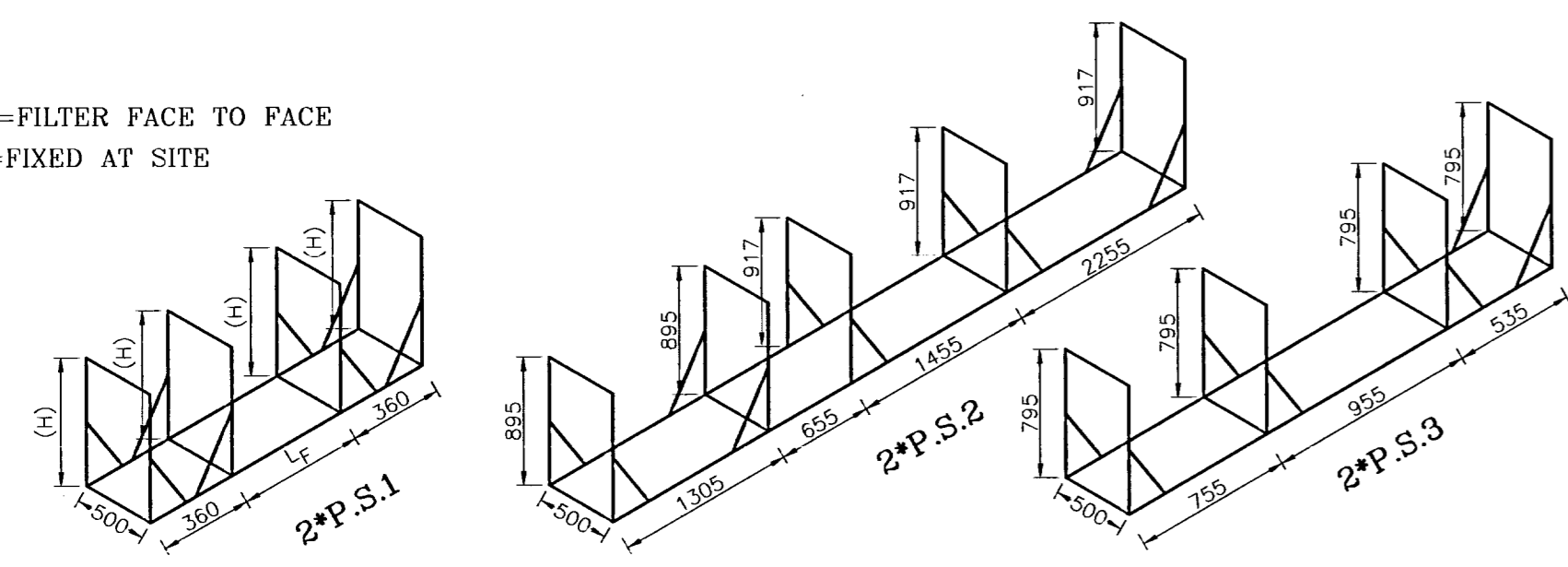


P L A N

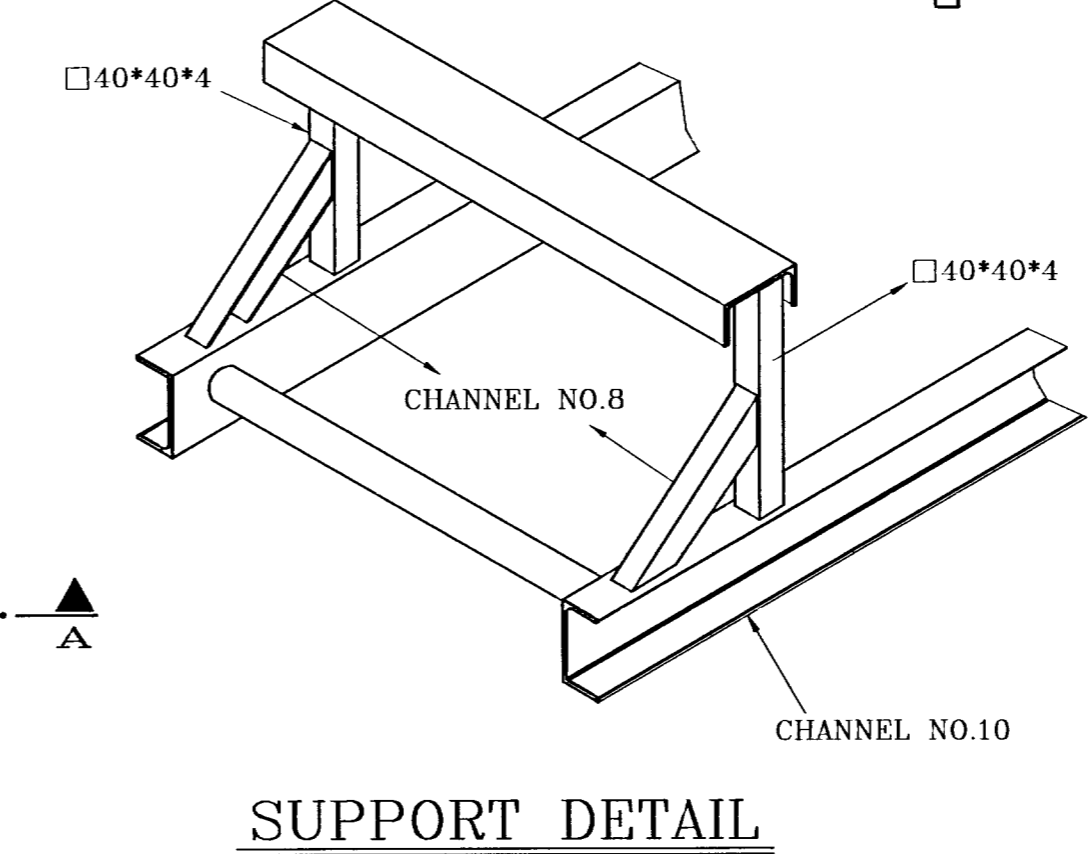


SECTION A-A

L_F=FILTER FACE TO FACE
H=FIXED AT SITE

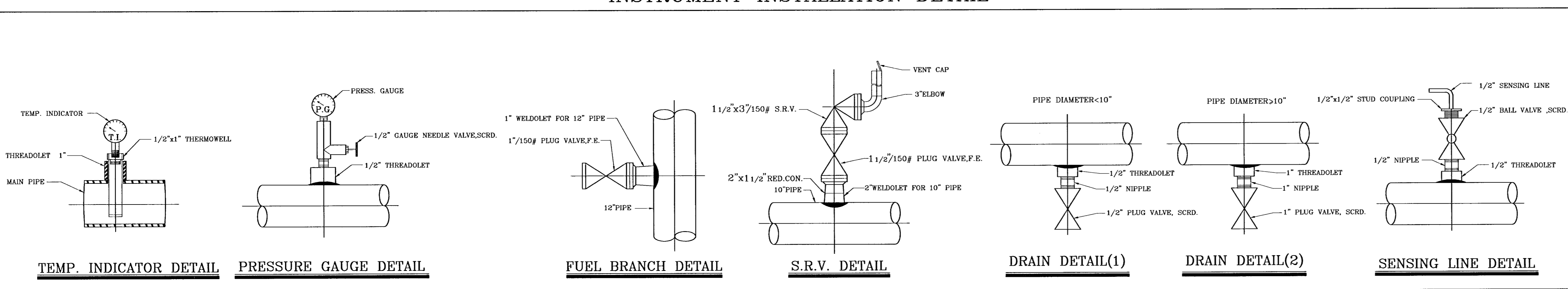


STATION FOUNDATION DETAIL



SUPPORT DETAIL

INSTRUMENT INSTALLATION DETAIL



| ITEM | SIZE | DESCRIPTION | CLASS |
|------|---------|---|-------|
| 1 | 2" | GAS PRESS. REGULATOR (S.P.=600 PSIG) | 600 |
| 2 | 2" | GAS PRESS. REGULATOR (S.P.=250 PSIG) | 600 |
| 3 | 2" | GAS PRESS. REGULATOR (S.P.=60 PSIG) | 600 |
| 4 | 1/2"x3" | SAFETY RELIEF VALVE (S.P.=66 PSIG) | 150 |
| 5 | 3" | DRY GAS FILTER | 600 |
| 6 | 3" | SAFETY SHUT OFF VALVE (S.P.=72 PSIG) | 600 |
| 7 | 10" | G-2500GAS TURBINE METER EQUIPPED WITH T.&P. CORR.DEVICE | 150 |
| 8 | 3" | PLUG VALVE, F.E. | 600 |
| 9 | 1 1/2" | PLUG VALVE, F.E. | 150 |
| 10 | 1" | PLUG VALVE, F.E. | 150 |
| 11 | 3" | BALL VALVE, F.E. | 600 |
| 12 | 10" | BALL VALVE, F.E. | 150 |

SETTING DATA

| | CUT1 | CUT2 | | S.R.V. | S.S.O.V. |
|-------|------|-------|--------|--------|----------|
| | REG. | M.REG | A.REG. | | |
| RUN 1 | 600 | 250 | 60 | 66 | 72 |
| RUN 2 | 580 | 240 | 58 | 66 | 74 |
| RUN 3 | 560 | 230 | 56 | 66 | 76 |

NOTES

- ALL DIMENSIONS ARE IN mm.
- ALL WELDING JOINTS SHOULD BE INSPECTED & RADIOGRAPHED %100.
- THE STATION SHOULD BE HYDROSTATICALLY TESTED UP TO 1.5xMAX W.P.
- SUPPORT NO.1 DIM.'S ARE BASED ON FILTER HEIGHT AND OTHER SUPPORTS DIM.'S ARE BASED ON 1000mm ST.HEIGHT.
- INLET, OUTLET AND BY-PASS VALVES OF HEATER HAVE BEEN CONSIDERED IN THE HEATER INSTALLATION PACKAGE DOCUMENT.
- REGULATORS SHALL BE EQUIPPED WITH LIMITING DEVICE FOR MAX. CAPACITY 15000 SCM/H
- RELIEF CAPACITY IS TEN PERCENT OF LINE CAPACITY

DESIGN DATA

| | | |
|------------------|----------|------|
| P _{IN} | 800-1400 | PSIG |
| P _{OUT} | 60 | PSIG |
| Q _s | 30000 | SCMH |

| REV. | DESCRIPTION | CHECK | DATE | APPR. | DATE |
|------|----------------------------|------------|---------|------------------|---------|
| F | | | | | |
| E | | | | | |
| D | | | | | |
| C | | | | | |
| B | | | | | |
| A | APPROVED AS A STANDARD MAP | B.D. GHANI | 06/4/17 | A.A. MEYDANSHAHI | 06/4/17 |

NATIONAL IRANIAN GAS COMPANY

ENGINEERING AND TECHNICAL AFFAIRS

STD.ST.1400.60.30000

| DRAWN (CONSULTANT) | DRAWN CH. (CONSULTANT) | FINAL CH. | SCALE | DRAWING NO. |
|---------------------|------------------------|---------------|--------|-----------------------|
| M.KHALEDI | N.MOKHTARANI | S.KAZEMI | N.T.S. | STD.ST. 1400.60.30000 |
| DESIGN (CONSULTANT) | DESIGN CH. | APPROVED | DATE | |
| N.MOKHTARANI | B.MIRZAI | M.GHODSIZADEH | FAR 85 | A |